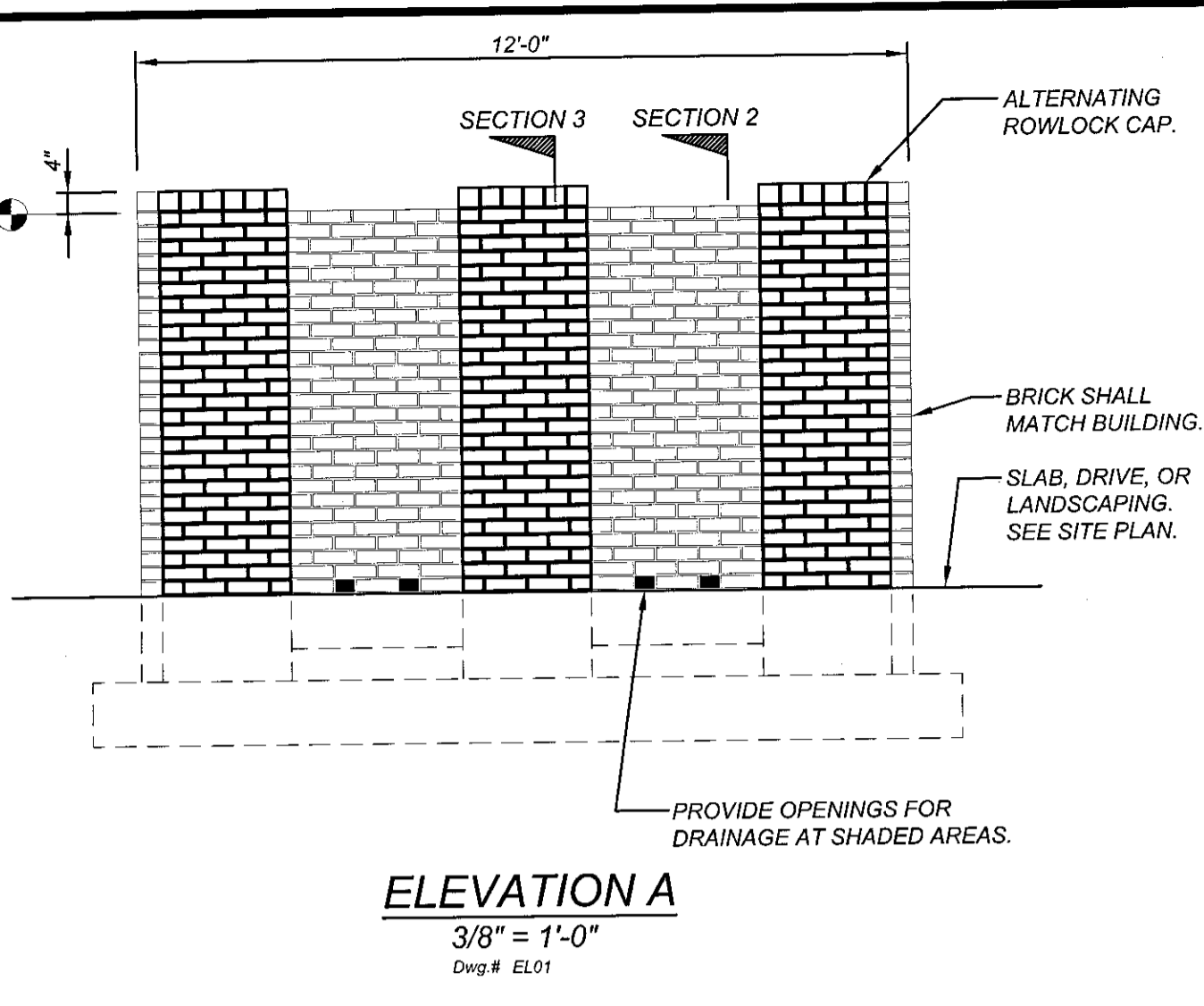
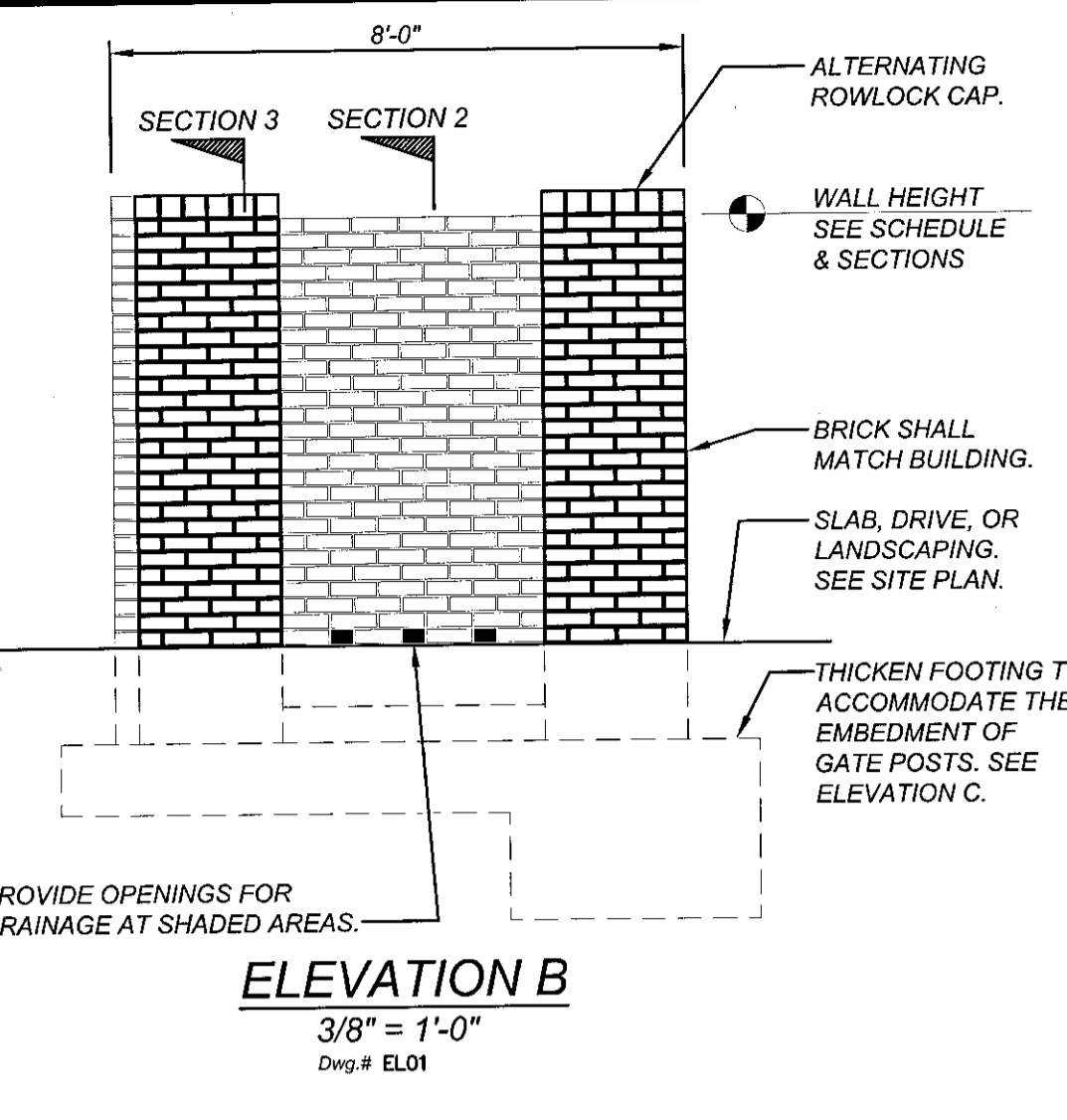


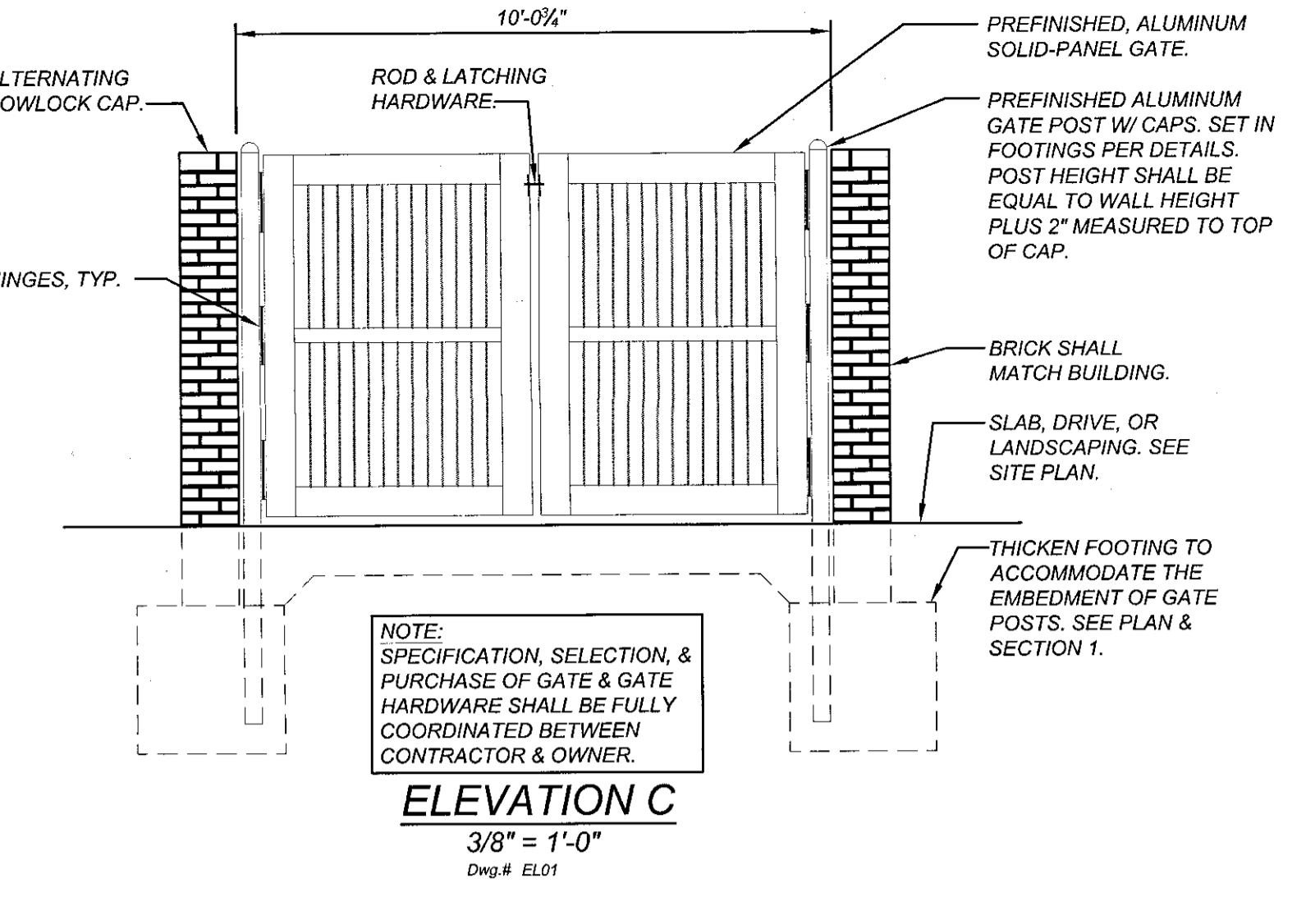
DUMPSTER SCREEN WALL PLAN
1/2" = 1'-0"
Dwg # PL01



ELEVATION A
3/8" = 1'-0"
Dwg # EL01



ELEVATION B
3/8" = 1'-0"
Dwg # EL01



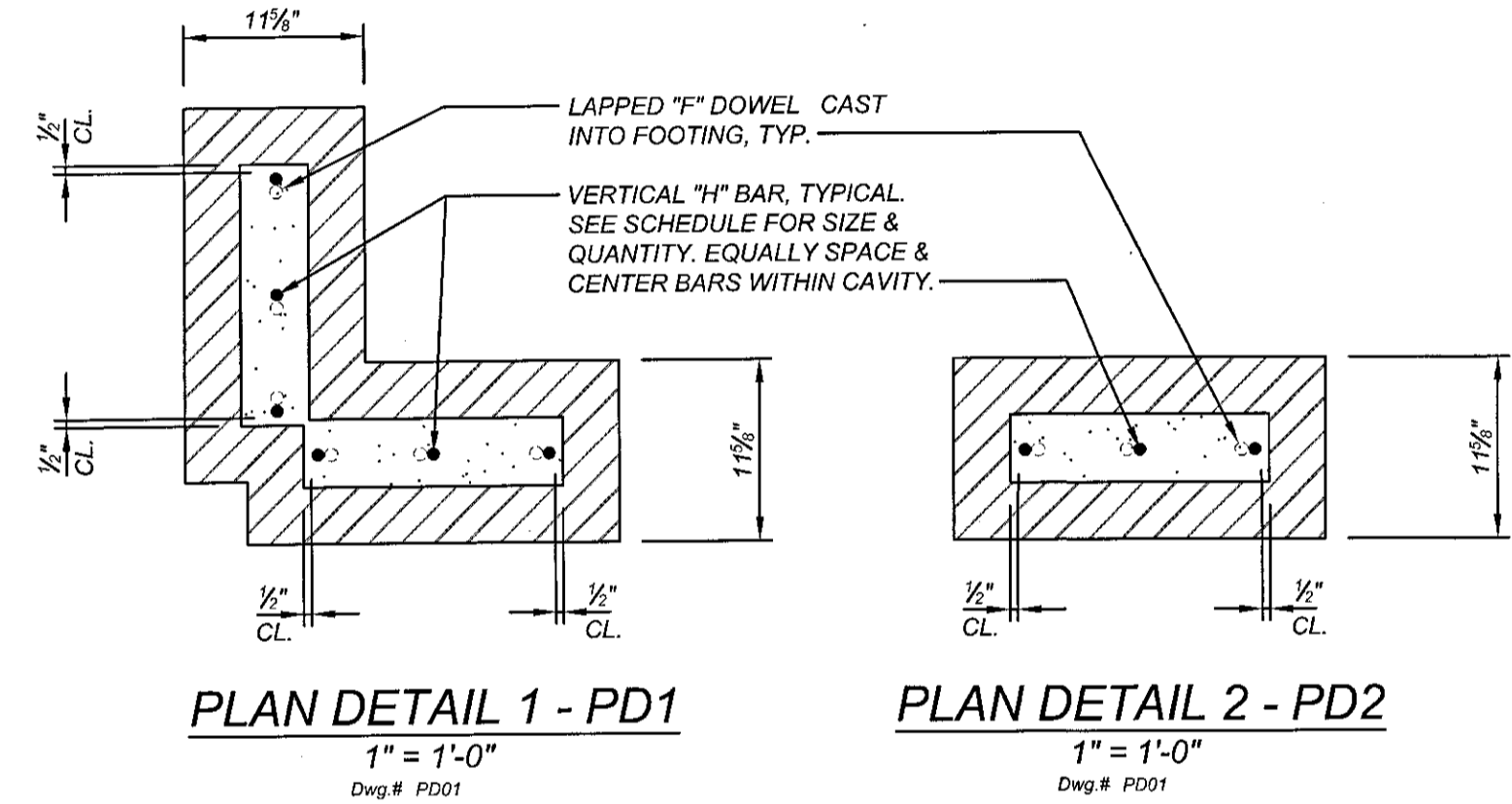
ELEVATION C
3/8" = 1'-0"
Dwg # EL01

- DUMPSTER SCREEN WALL PLAN NOTES:**
- ELEVATIONS ARE INDICATED THUS ON PLAN:
(...) TOP OF DUMPSTER PAD REFERENCED 0'-0" ON PLAN.
(...) TOP OF FOOTING ELEVATION BELOW REFERENCE ELEVATION
 - THE DUMPSTER PAD SHALL BE A 6-INCH THICK CONCRETE SLAB, REINFORCED WITH 6 X 6 - W1.4 X W1.4 WELDED WIRE FABRIC, PLACED 1" CLEAR FROM TOP OF SLAB. PLACE SLAB OVER 4" MINIMUM OF COMPACTED CLEAN WASHED STONE. COORDINATE SUBGRADE PREPARATION REQUIREMENTS WITH SOILS REPORT.
 - ALL FOOTINGS ARE TO BE FOUNDED ON RESIDUAL SOIL OR STRUCTURAL FILL HAVING A MINIMUM BEARING CAPACITY OF 3000 PSF. ACCEPTABLE SOIL BEARING PRESSURE IS TO BE VERIFIED BY AN INDEPENDENT TESTING LABORATORY AT THE TIME THE FOOTING EXCAVATIONS ARE MADE.
 - GENERAL CONTRACTOR SHALL COORDINATE THE TOP OF FOOTING ELEVATION WITH PLAN, SECTIONS, ELEVATIONS, AND SITE GRADING PLAN PRIOR TO FABRICATION OF REINFORCING STEEL.
 - EXCAVATIONS FOR FOOTINGS SHALL BE MAINTAIN IN A DRY CONDITION UNTIL CONCRETE IS PLACED. WHENEVER POSSIBLE, THE EXCAVATION SHALL BE MADE, THE BEARING SURFACE INSPECTED, AND THE CONCRETE PLACED THE SAME DAY.
 - ALL CAST-IN-PLACE CONCRETE SHALL BE AIR-ENTRAINED HAVING A 28-DAY COMPRESSIVE STRENGTH OF 3000 PSI AND A WATER CEMENT RATIO NOT EXCEEDING 0.45. FOR CONCRETE MATERIALS, MIX ADJUSTURES, SLUMP, CURING, HARDENING AND PROTECTING, FINISHING, CLEANING AND PATCHING, SEE THE REQUIREMENTS OF THE PROJECT SPECIFICATIONS.
 - ALL REINFORCING STEEL SHALL CONFORM TO ASTM A615, GRADE 60, UNLESS OTHERWISE NOTED. LAP REINFORCING STEEL 30 X BAR DIAMETERS. WELDED WIRE FABRIC SHALL CONFORM TO ASTM A185. LAP ONE HALF MESH DIMENSION, PLUS END EXTENSIONS OF WIRES NOT LESS THAN 6". ALL REINFORCING STEEL (INCLUDING WELDED WIRE FABRIC) SHALL BE SECURELY TIED AND ANCHORED IN PLACE TO PREVENT DISLOCATION DURING THE PLACING OPERATION.
 - BRICK TO MATCH THAT USED AT BUILDING. NET AREA COMPRESSIVE STRENGTH OF CLAY MASONRY (m) FOR BRICK USED AT DUMPSTER SCREEN WALLS SHALL BE 3000 PSI.
 - DESIGN IN ACCORDANCE WITH THE 2009 NORTH CAROLINA STATE BUILDING CODE.

DESIGN LOADS:
SOIL BEARING CAPACITY: 3000 PSF
SITE CLASSIFICATION: CLASS D
SEISMIC IMPORTANCE FACTOR, I_e: 1.0
SPECTRAL RESPONSE ACCELERATION, S_{DS}: 23.3 % g
DESIGN WIND SPEED: 100 MPH
EXPOSURE: C
WIND IMPORTANCE FACTOR, I_w: 0.87

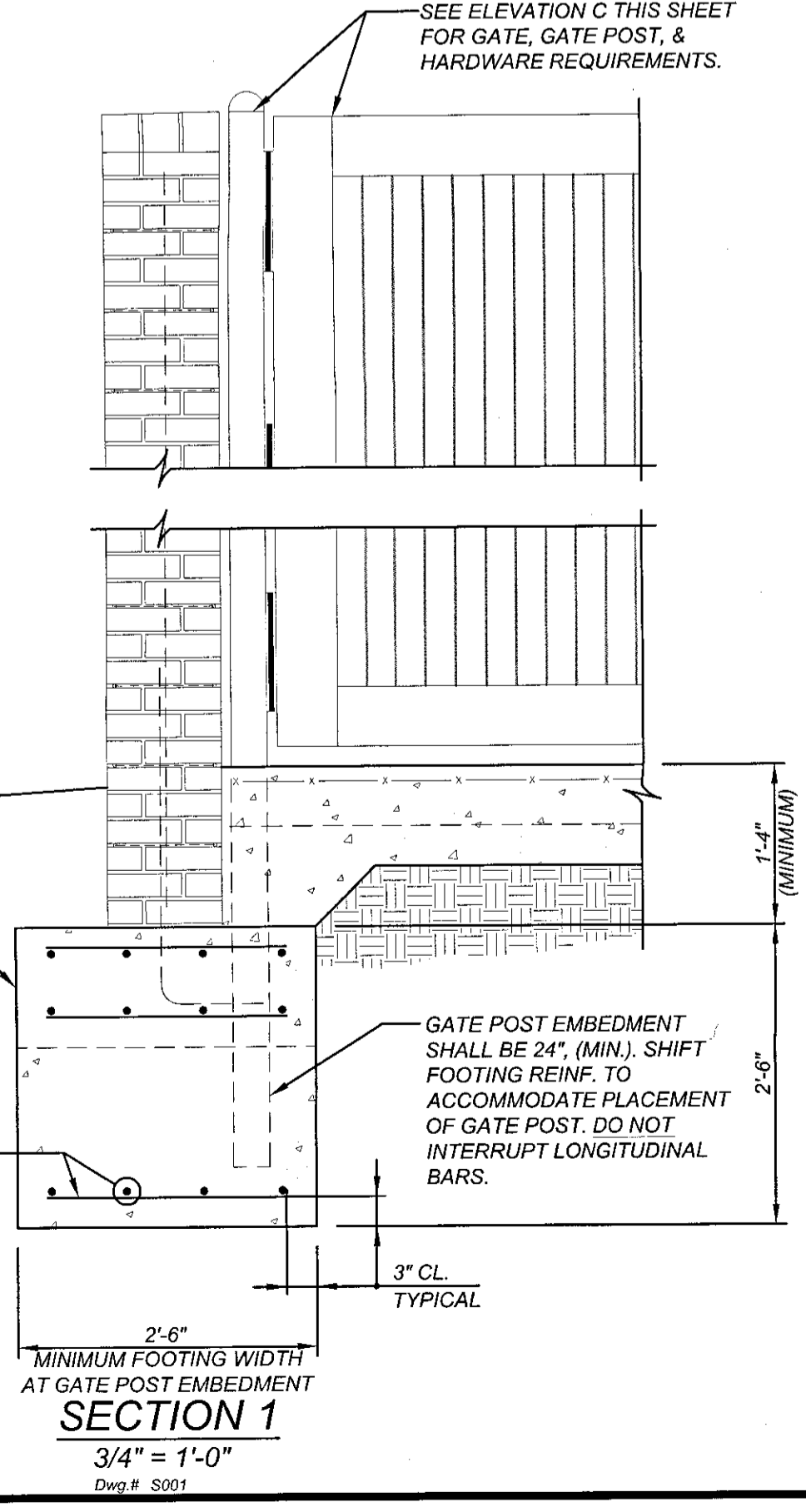
WALL DESIGN SCHEDULE

A	B	C	D	E	F	G	H
2'-0"	1'-0"	6'-0"	(6) #5	#5 @ 10" O/C	(2) #4	24"	(2) #4

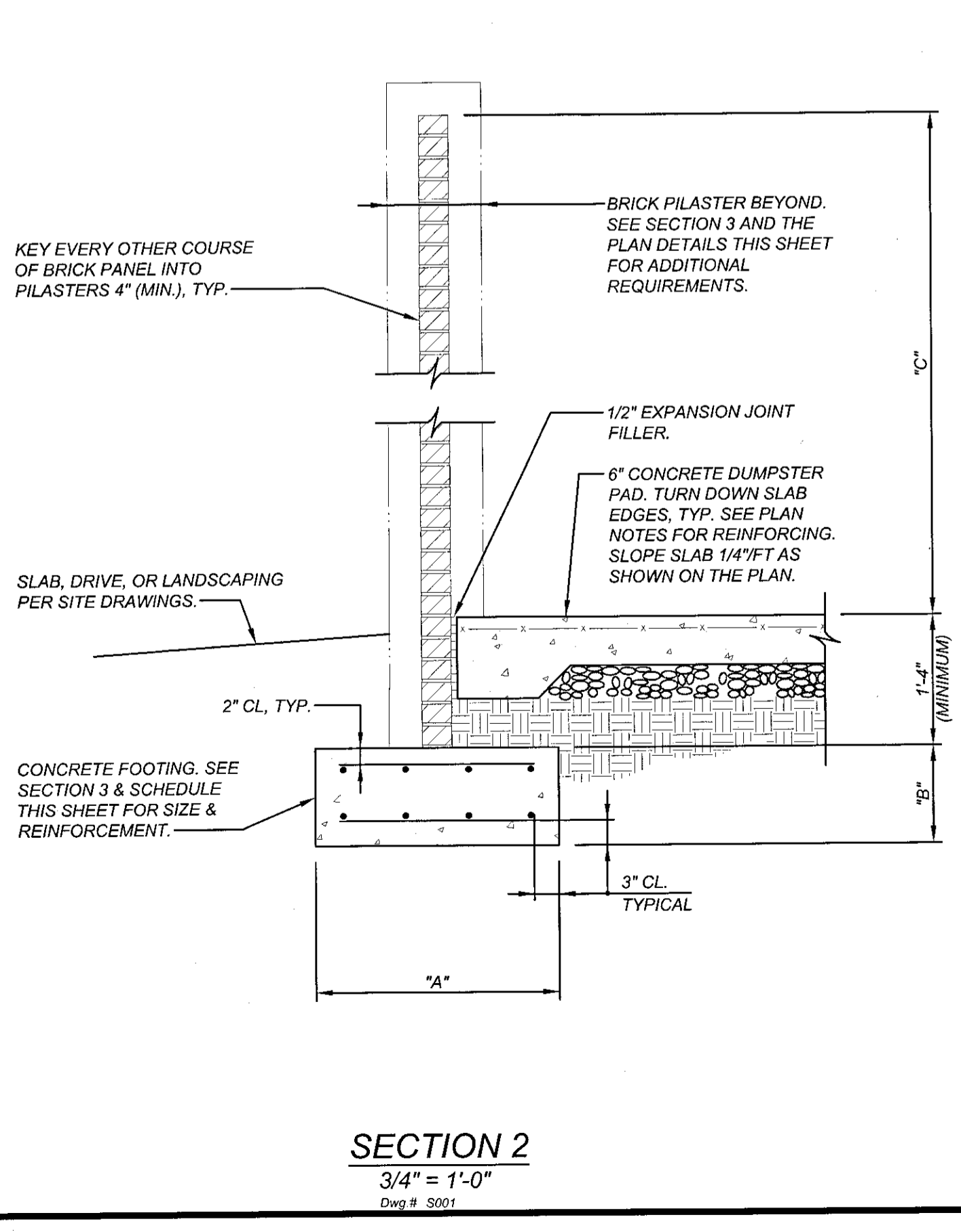


PLAN DETAIL 1 - PD1
1" = 1'-0"
Dwg # PD01

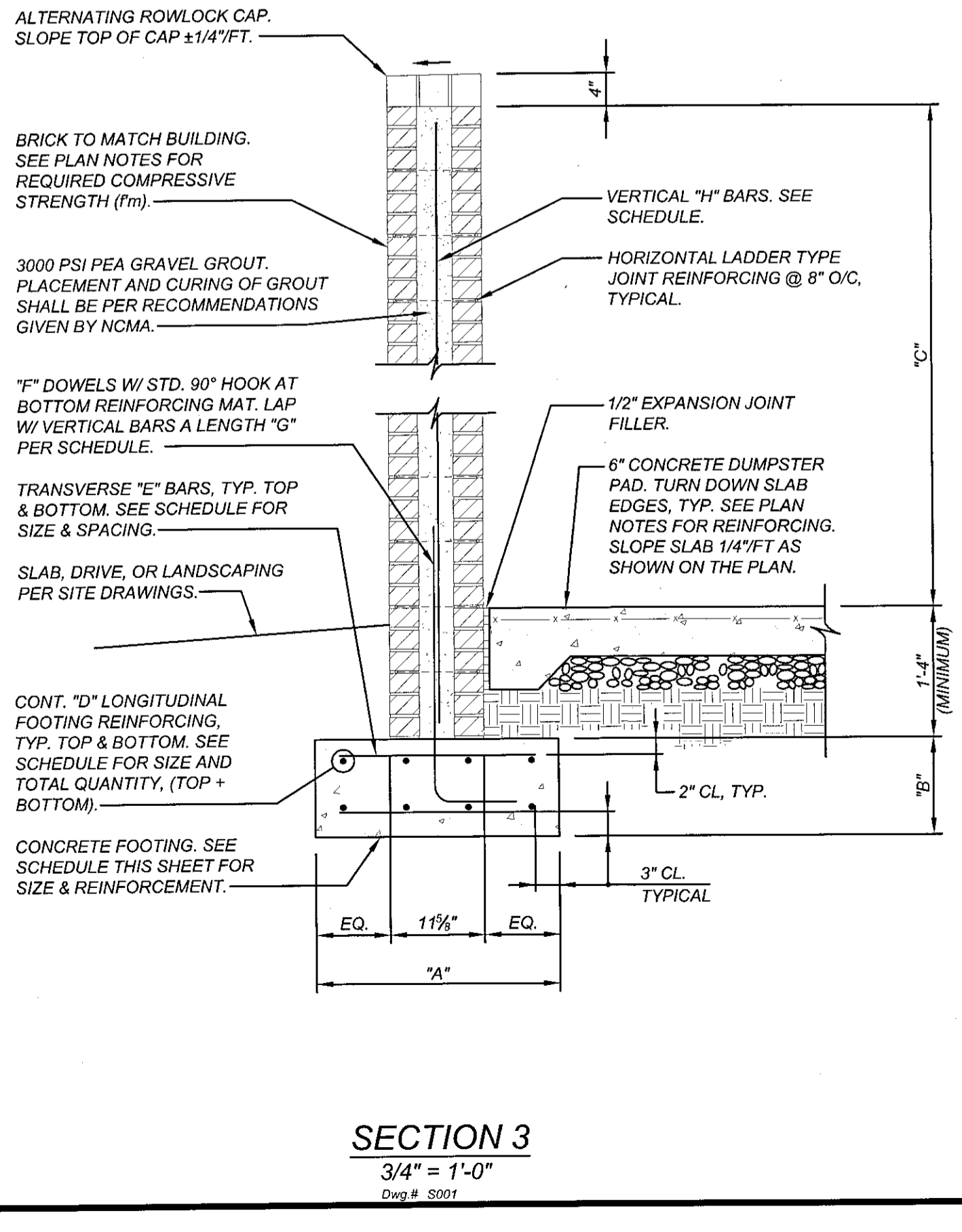
PLAN DETAIL 2 - PD2
1" = 1'-0"
Dwg # PD01



SECTION 1
3/4" = 1'-0"
Dwg # S001



SECTION 2
3/4" = 1'-0"
Dwg # S001



SECTION 3
3/4" = 1'-0"
Dwg # S001



ENGINEERED CONCEPTS
POST OFFICE BOX 35286
GREENSBORO, NC 27425-5286
OFFICE 336.605.8020
FAX 336.605.9392
WWW.ENGINEEREDCONCEPTS.COM
PRELIMINARY DESIGN - NOT RELEASED FOR CONSTRUCTION

REVISIONS

NO.	DATE	DESCRIPTION	BY
1	07-16-08	REVISE PER NEW LIGHT LOCATIONS	JWR
2	08-15-08	REVISE PER TOWN SCOPING MEETING	STH
3	09-19-08	REVISE PER TOWN COMMENTS #1	STH
4	10-09-08	REVISE PER TOWN COMMENTS #2	STH
5	09-13-10	REVISE PER NEW SURVEY	JWR

COMMERCIAL SITE DESIGN
8372 GREENWOOD ROAD
RALEIGH, NORTH CAROLINA 27615
(919) 848-4021 FAX: (919) 848-3741
WWW.CSITDESIGN.COM

CLIENT:
BRANCH BANKING & TRUST CO.
P.O. BOX 1290
WINSTON-SALEM, N.C. 27102-1290
PHONE: (336) 703-5705
FAX: (336) 703-5739

PROJECT NO. BBT-0714
FILENAME: BBT0714-DE1
DRAWN BY: JWR
SCALE: N.T.S.
DATE: OCTOBER 17, 2007
SHEET NO. DE-1

BB&T SOUTH PARK VILLAGE 701 VILLAGE WALK DRIVE HOLLY SPRINGS, NORTH CAROLINA
DUMPSTER ENCLOSURE DETAILS