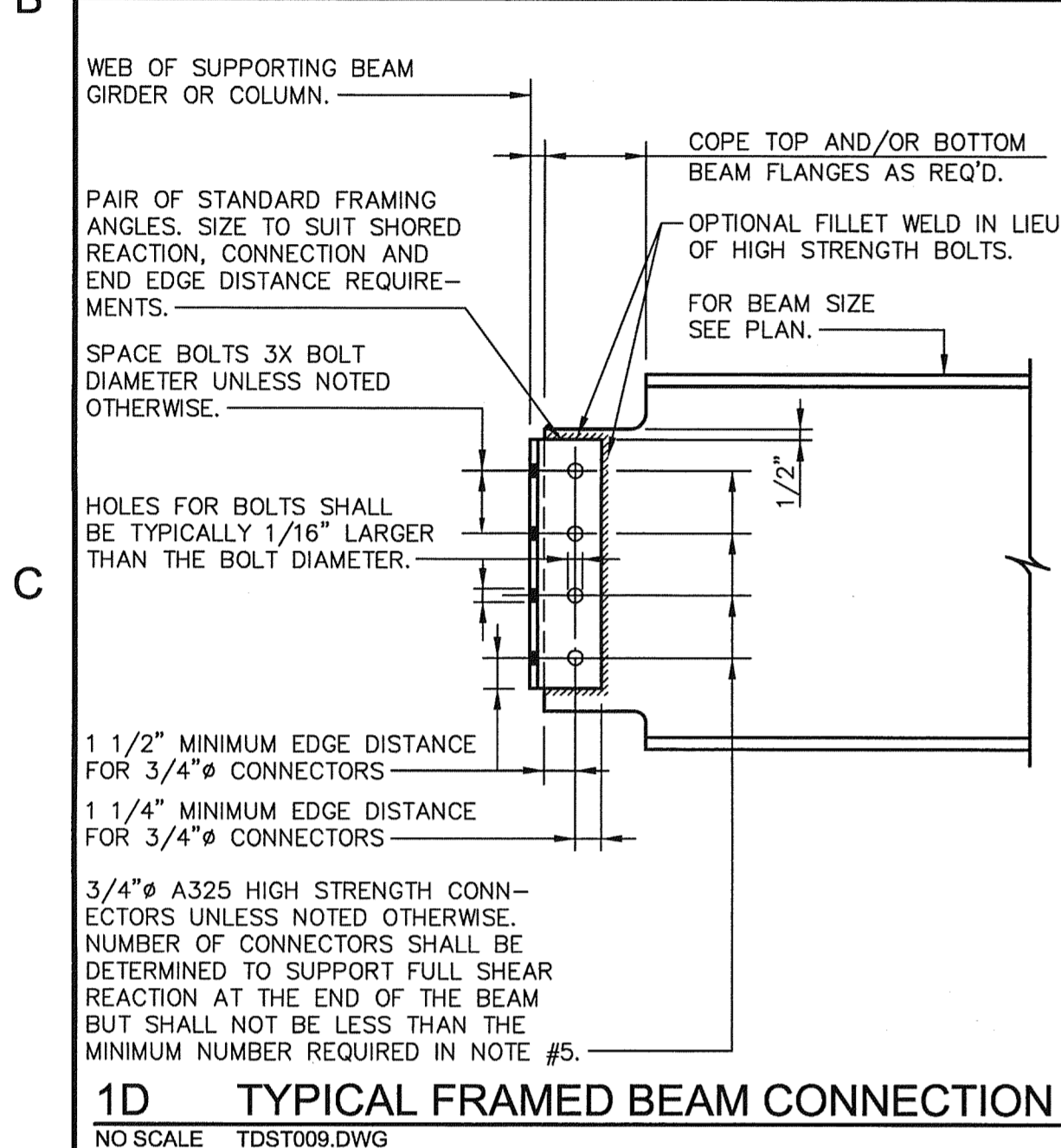
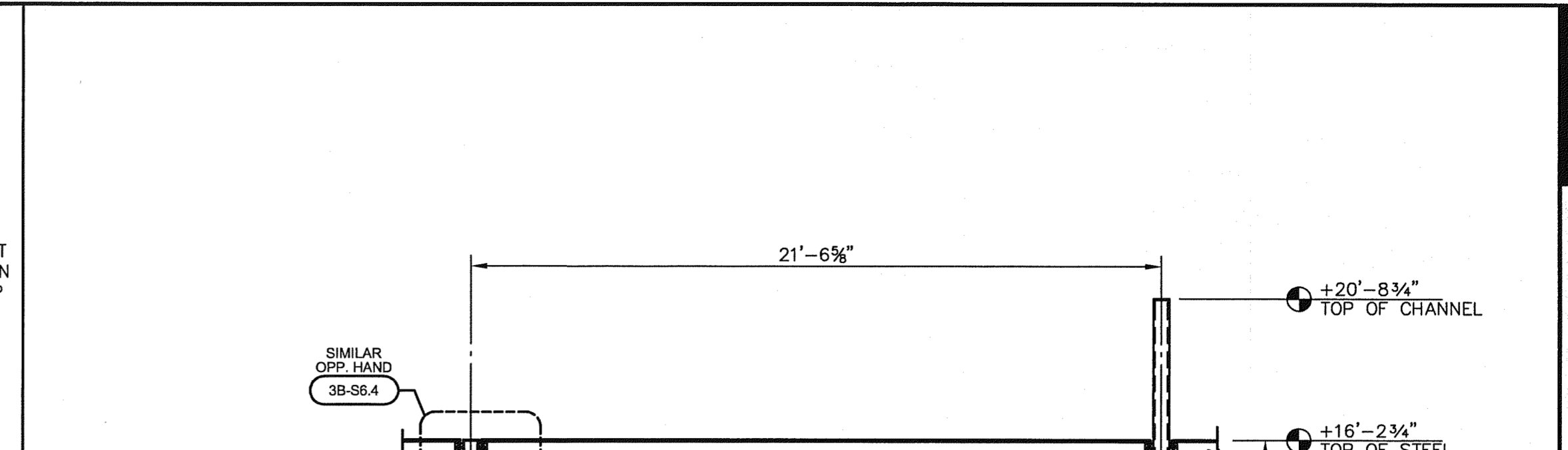
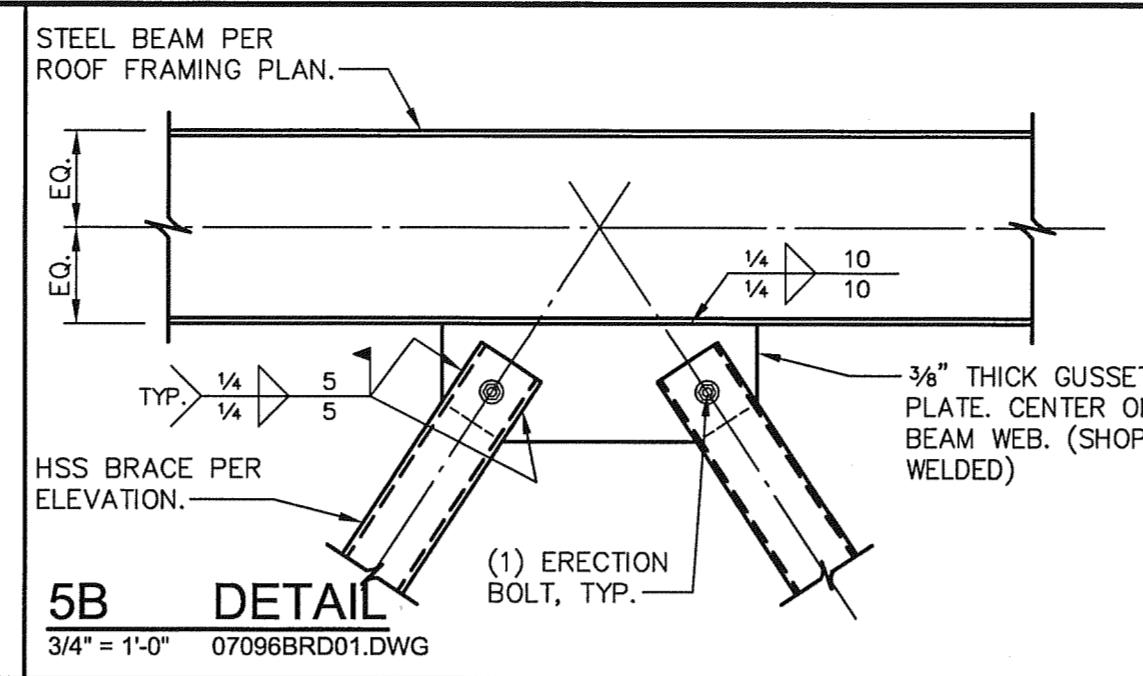
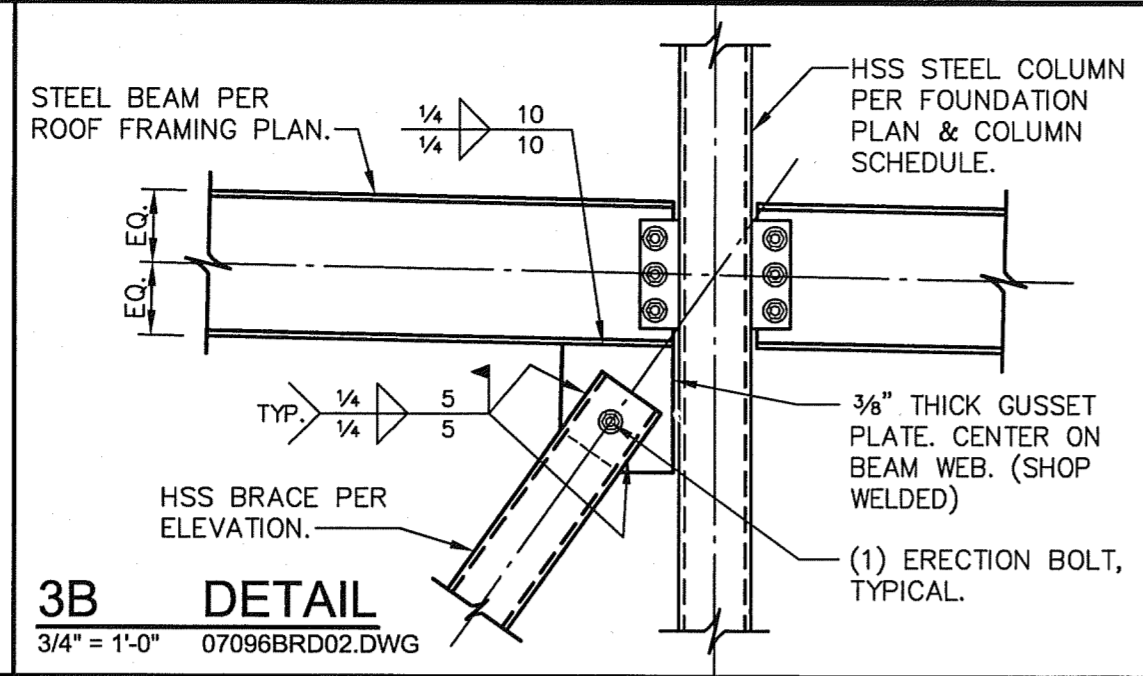
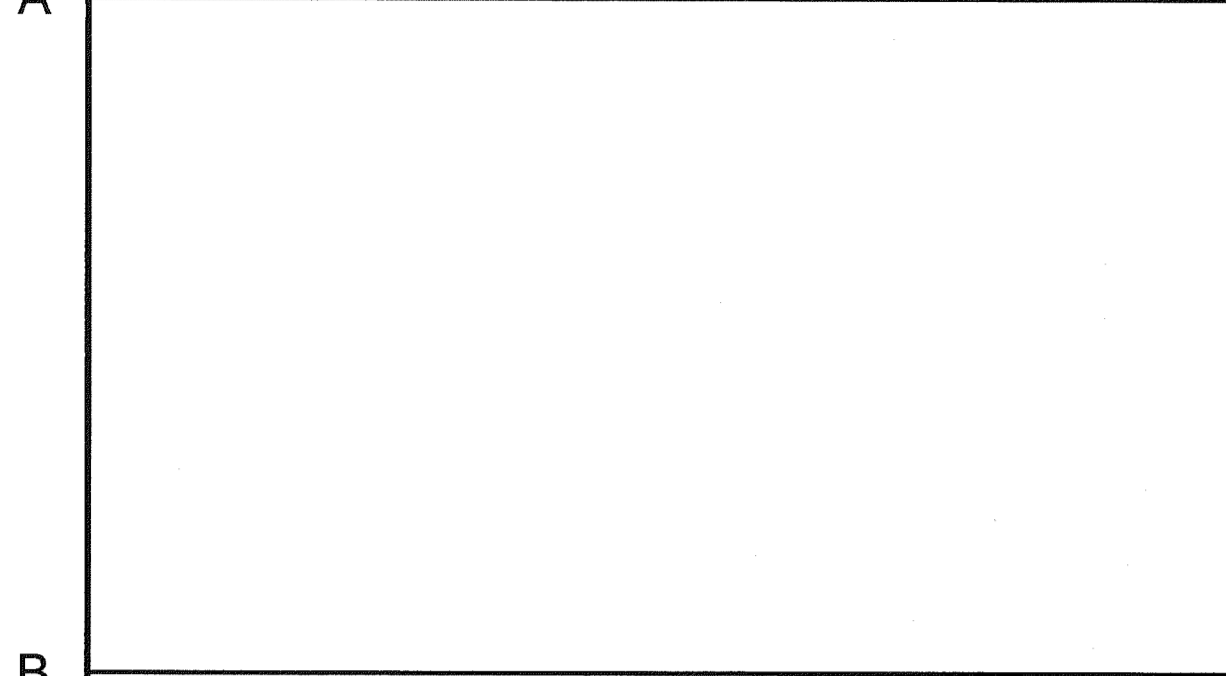
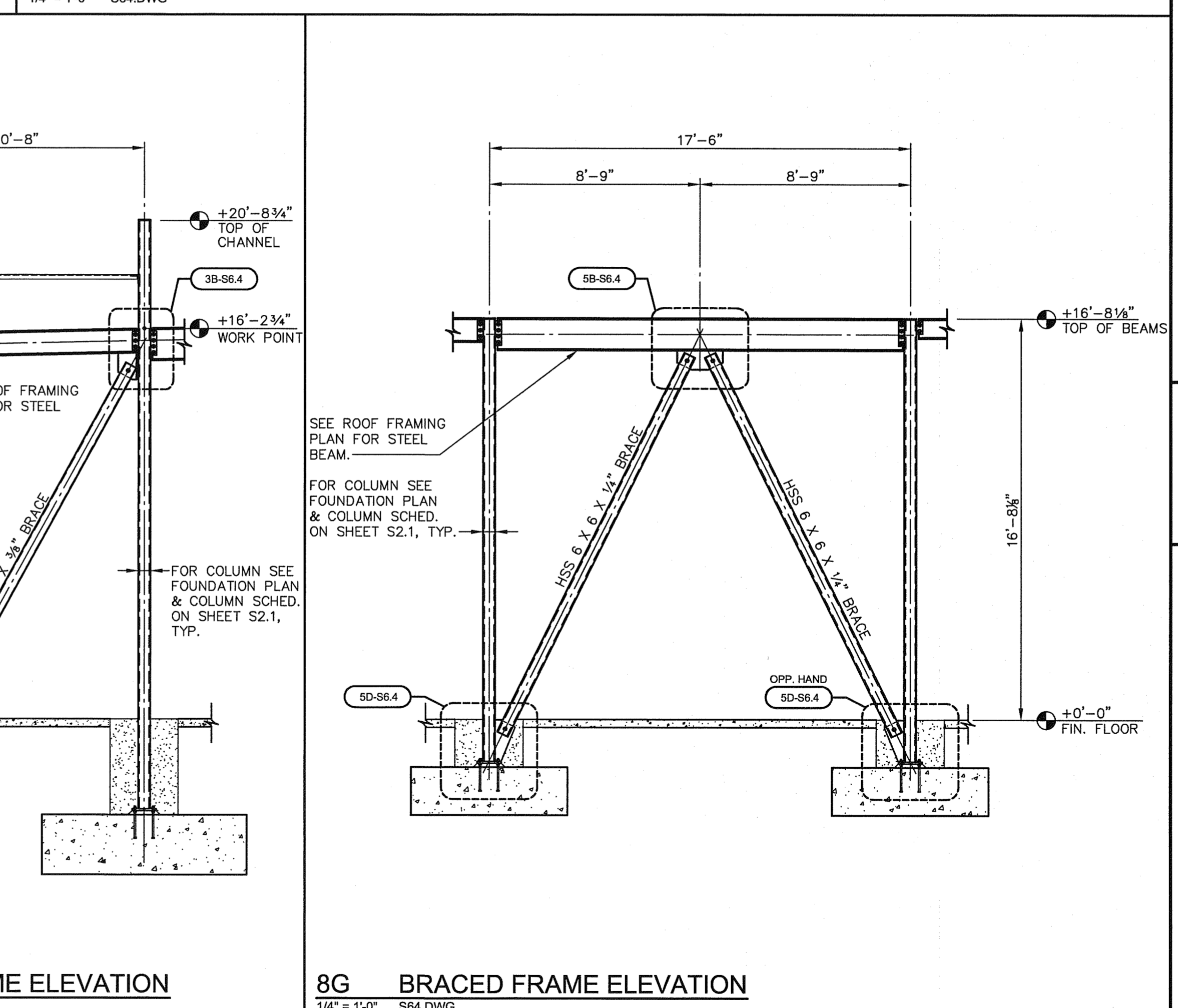
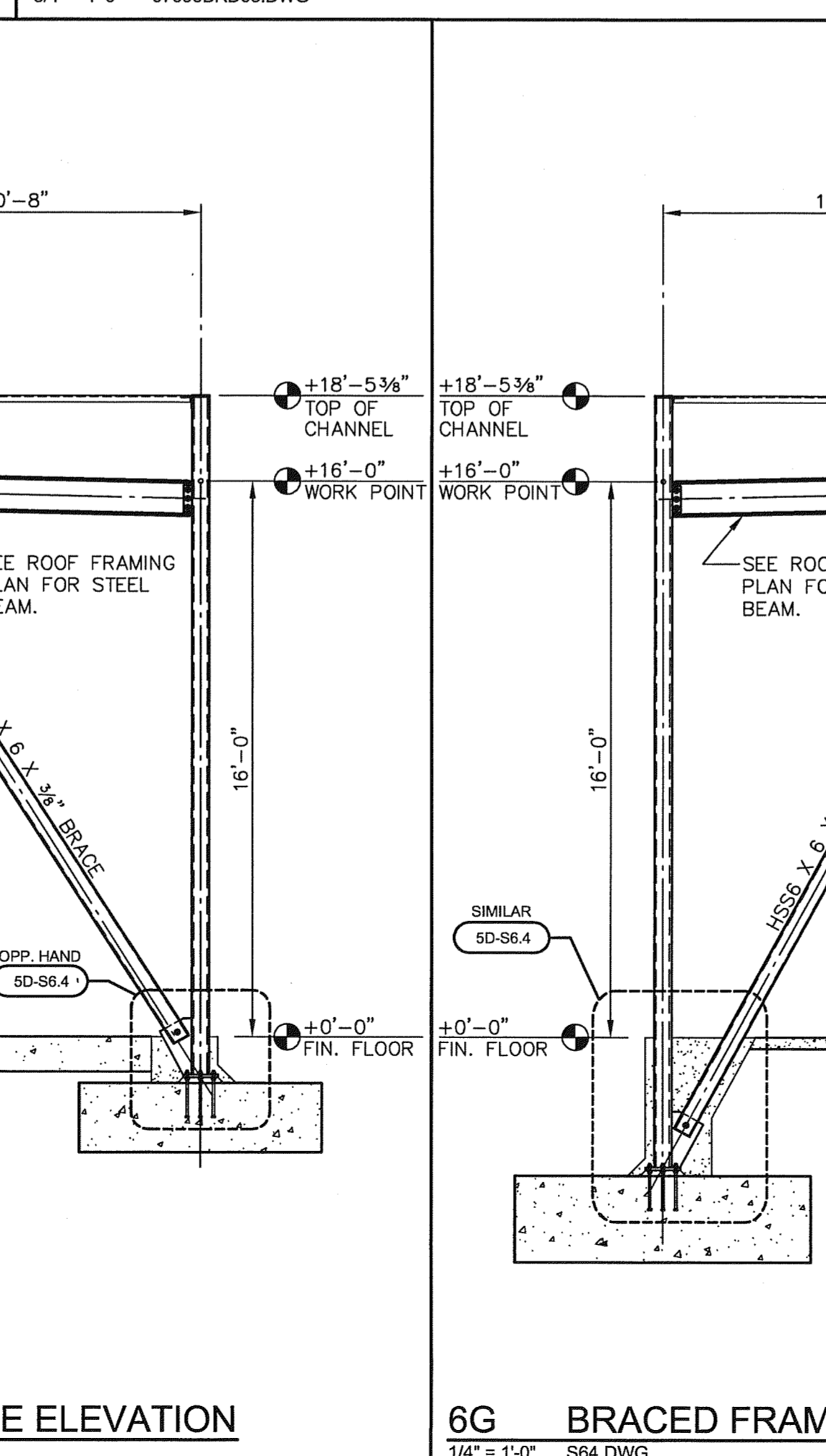
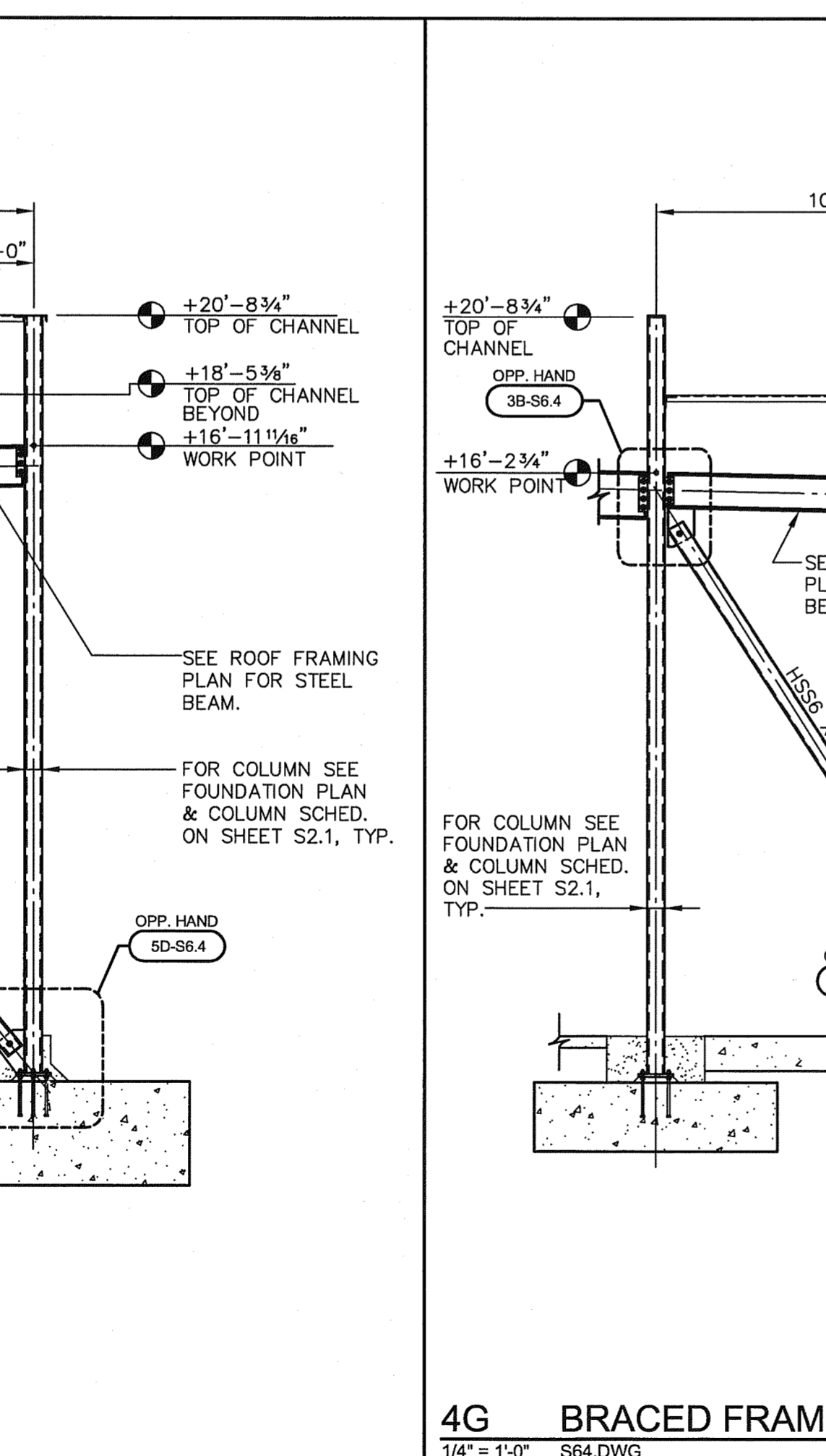
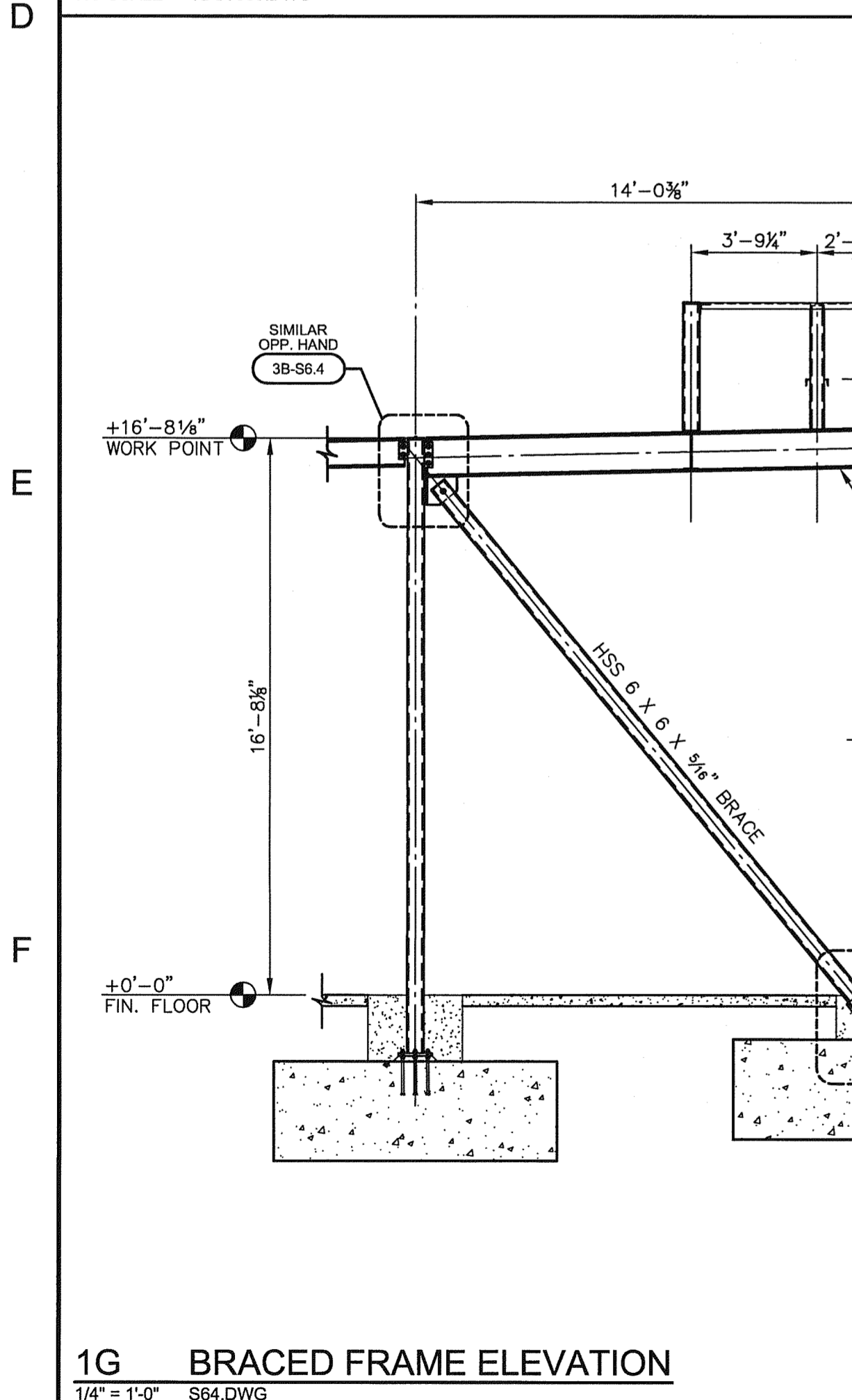
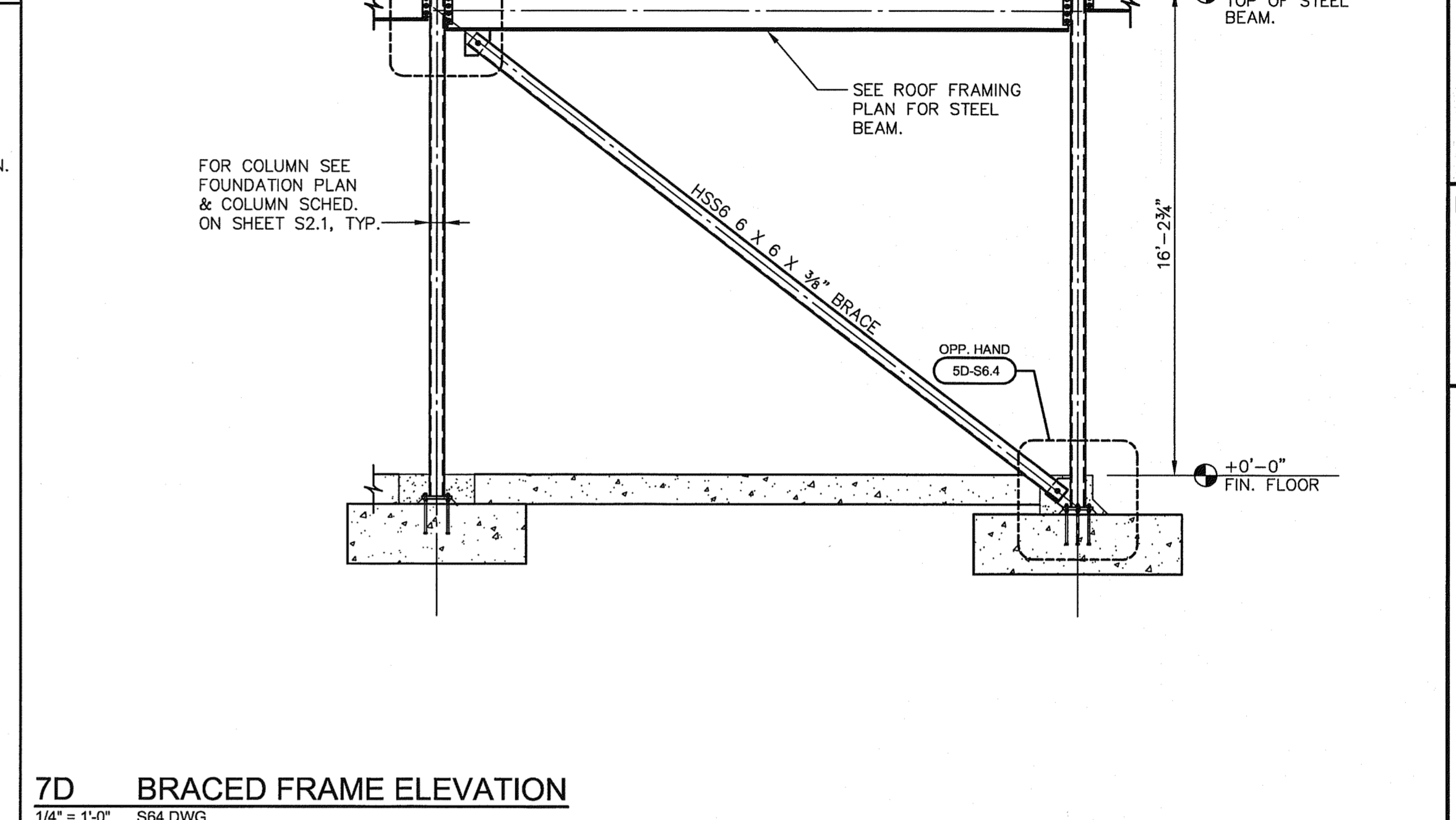
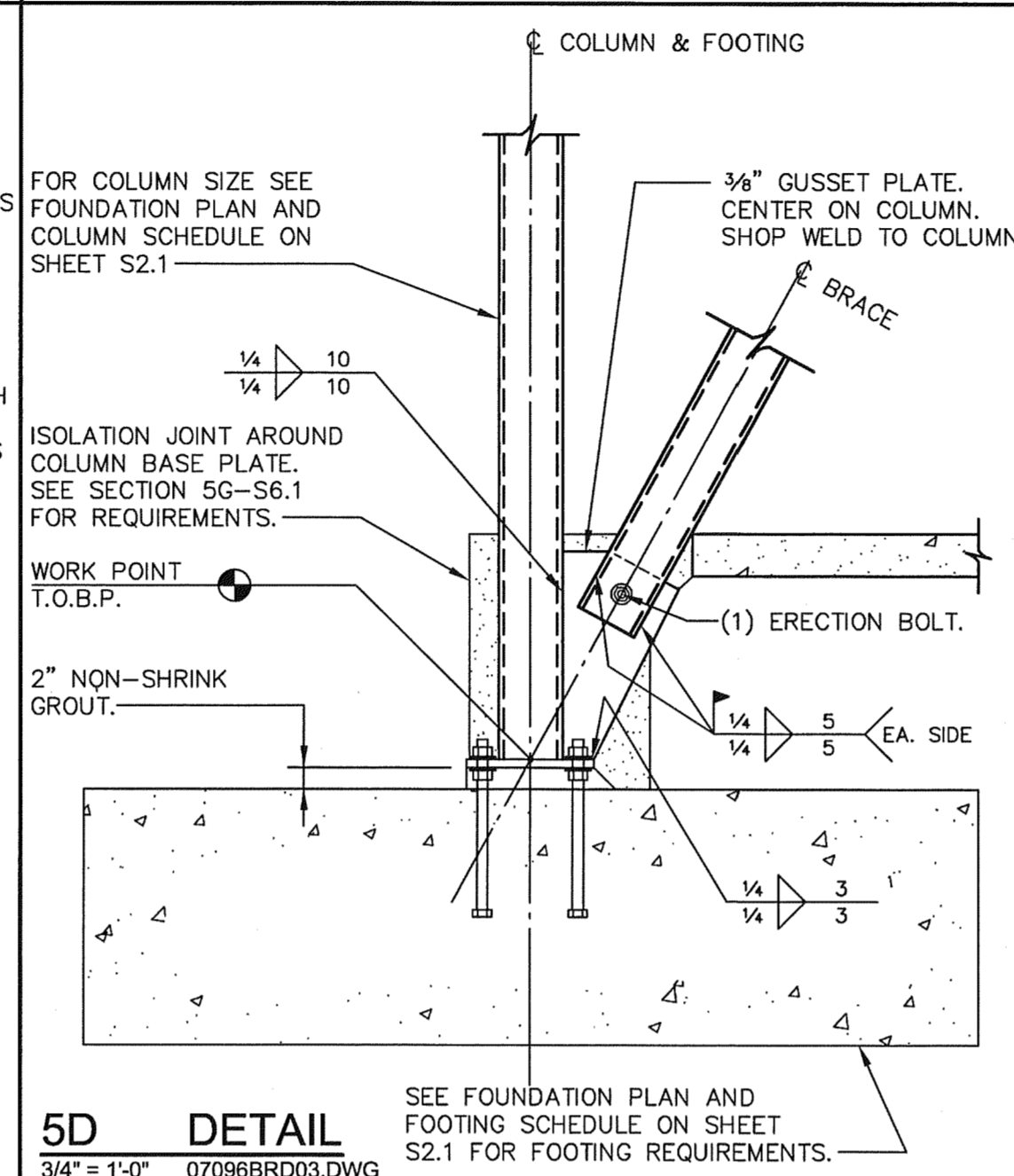


1 2 3 4 5 6 7 8 9 10 11



NOTES - STANDARD BEAM & GIRDER CONNECTIONS

- UNLESS NOTED OTHERWISE, STANDARD CONNECTION OF BEAMS AND GIRDERS SHALL BE DESIGNED AS FLEXIBLE CONNECTIONS AND SHALL BE PROPORTIONED ONLY FOR THE REACTION SHEARS. STANDARD CONNECTIONS SHALL BE DESIGNED AS DETAILED BY THE ARCHITECT/ENGINEER IN ACCORDANCE WITH ALL APPLICABLE PROVISIONS OF THE "SPECIFICATIONS FOR STRUCTURAL STEEL BUILDINGS, ALLOWABLE STRESS DESIGN AND PLASTIC DESIGN," DATED JANUARY 1, 1989, AND SUBMITTED TO THE ARCHITECT/ENGINEER FOR REVIEW AND APPROVAL.
- BOLTED CONNECTIONS SHALL BE MADE USING 3/4" A325 HIGH STRENGTH FASTENERS UNLESS OTHERWISE APPROVED BY THE ARCHITECT/ENGINEER. ALL CONNECTORS SHALL HAVE HARDENED STEEL WASHERS. 3/4" BOLTS SHALL BE TIGHTENED BY ONE OF THE APPROVED METHODS AND TO THE VALUES SET FORTH IN THE AISC SPECIFICATION FOR STRUCTURAL JOINTS USING ASTM A325 OR A490 BOLTS.
- THE REACTION USED IN DESIGN SHALL BE ONE-HALF THE TOTAL UNIFORM LOAD CAPACITY OF THE BEAM UNLESS A LARGER REACTION IS INDICATED IN THE CONTRACT DOCUMENTS.
- DUE CONSIDERATION SHALL BE GIVEN TO BOLT SHEAR, BOLT BEARING ON CONNECTING MATERIAL, BEAM WEB TEAR-OUT (BLOCK SHEAR), SHEAR ON NET AREA OF THE CONNECTION ANGLES AND LOCAL BENDING STRESSES.
- MINIMUM NUMBER OF BOLTS PER CONNECTION SHALL BE AS FOLLOWS: 2 ROWS FOR W8" & W10", 3 ROWS FOR W12" & W14", 4 ROWS FOR W16" & W18", 5 ROWS FOR W21" & W24 BEAMS.



LAMBERT
ARCHITECTURE - INTERIORS

2400 Reynolda Road
Suite 202
Winston-Salem, NC 27106
Phone 336 777 3657
Fax 336 777 3658
www.lambertai.com

ENGINEERED CONCEPTS

POST OFFICE BOX 35286
GREENSBORO, NC 27425-5286
OFFICE 336 605 8020
FAX 336 605 9392
WWW.ENGCONCEPTS.COM

BB&T

BRANCH BANK
701 VILLAGE WALK DRIVE
HOLLY SPRINGS, NC

BB&T PLANON # DEN-00000126

STATE OF NORTH CAROLINA
REGISTERED PROFESSIONAL ENGINEER
10441
ROBERT G. KENERLY
10/15/10

OWNER REVIEW
 PRELIMINARY DOCUMENTS
 DESIGN DEVELOPMENT DOCUMENTS
 PERMITTING DOCUMENTS
 BID DOCUMENTS
 CONSTRUCTION DOCUMENTS
 RECORD DOCUMENTS

REVISIONS:

JOB NO: 07096
SHEET

S6.4

DATE: 10/15/10
DRAWN: WJP

1 2 3 4 5 6 7 8 9 10 11