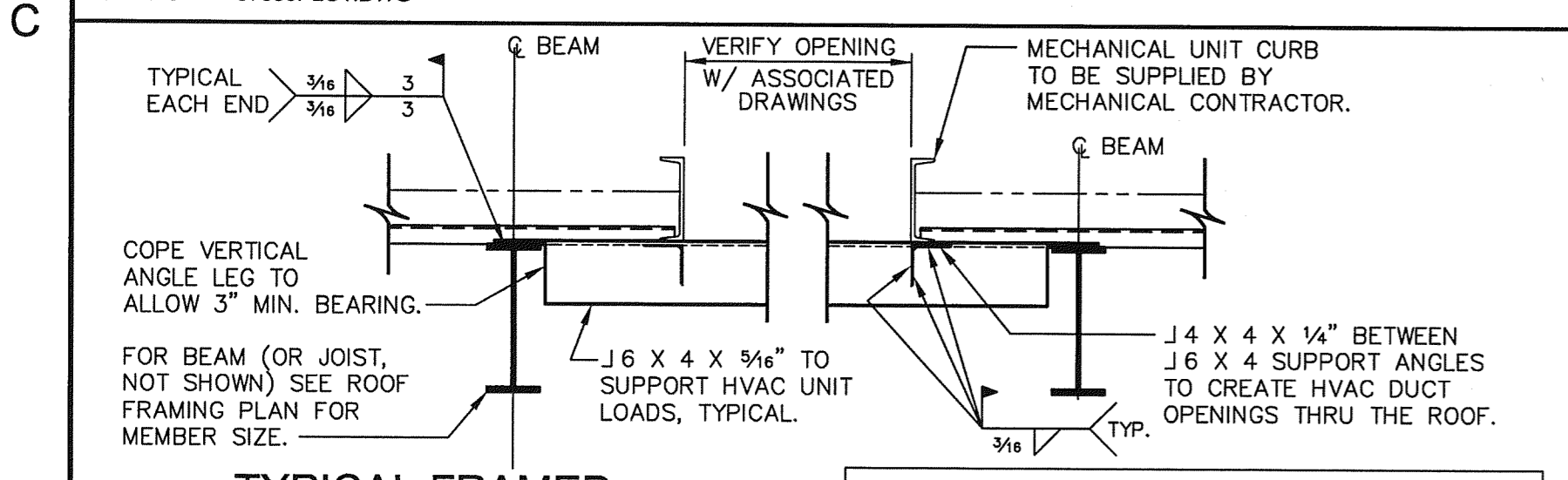
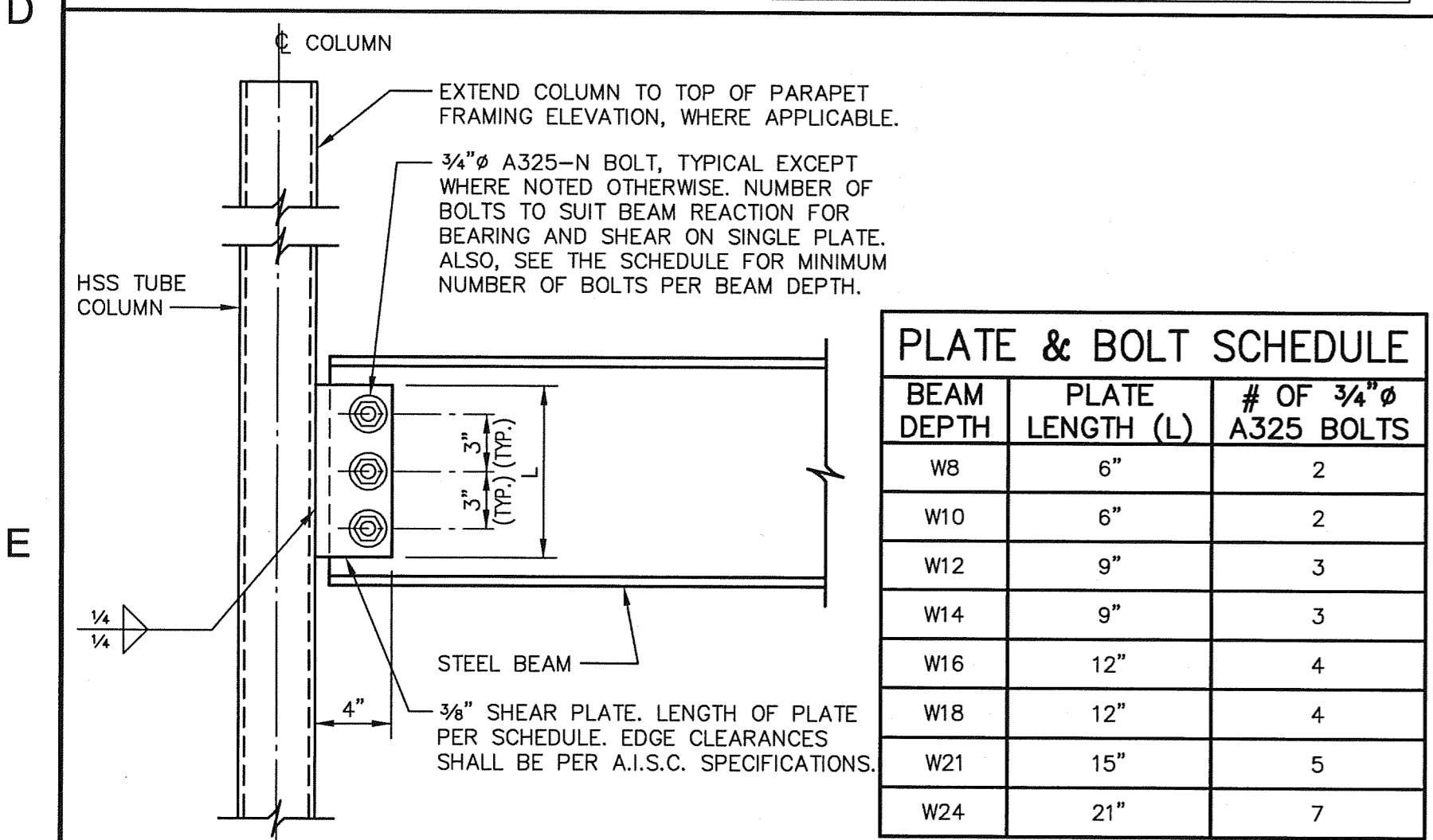


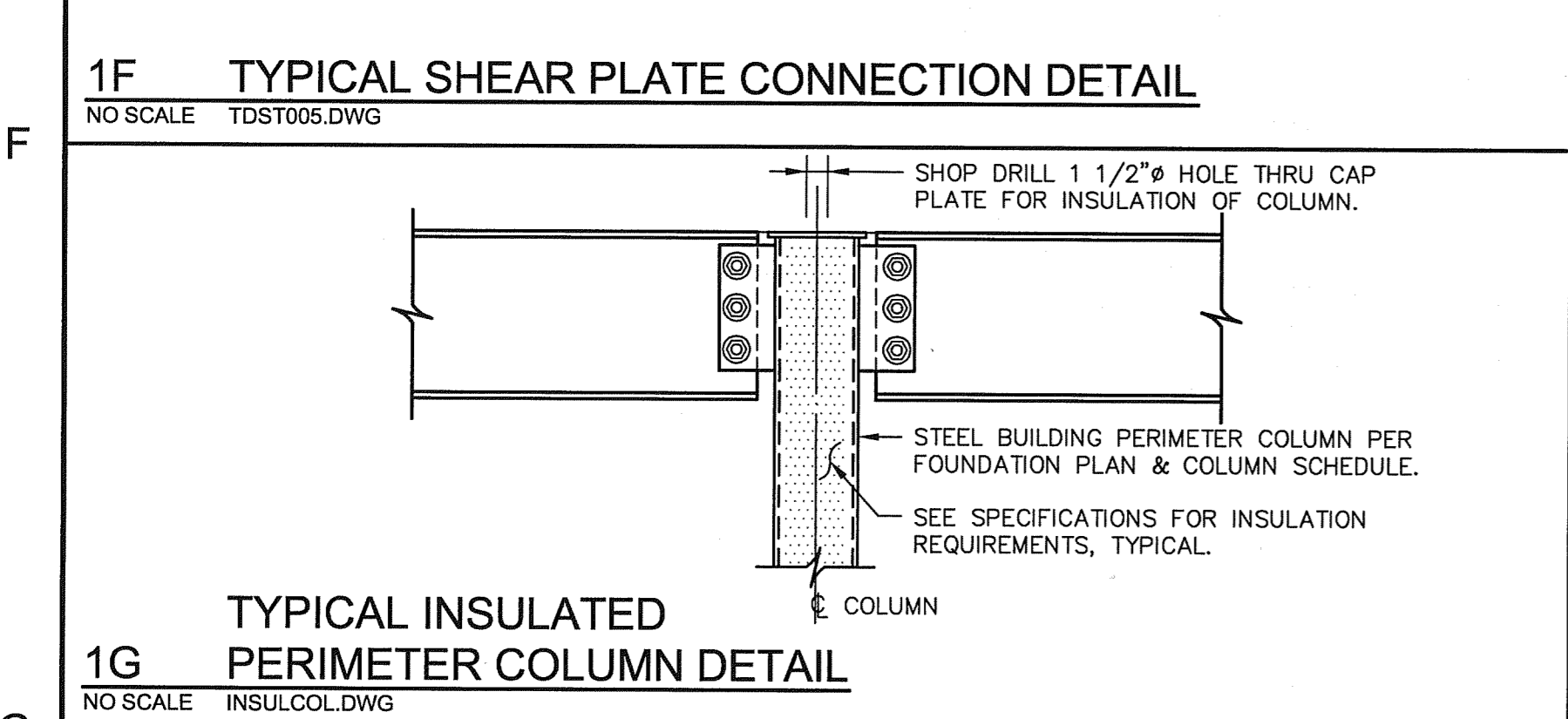
**1C PARTIAL FRAMING PLAN AT END OF DRIVE-THRU CANOPY**  
 1/4"=1'-0" 07096PL01.DWG



**1D TYPICAL FRAMED ROOF OPENING DETAIL**  
 NO SCALE TDST003.DWG



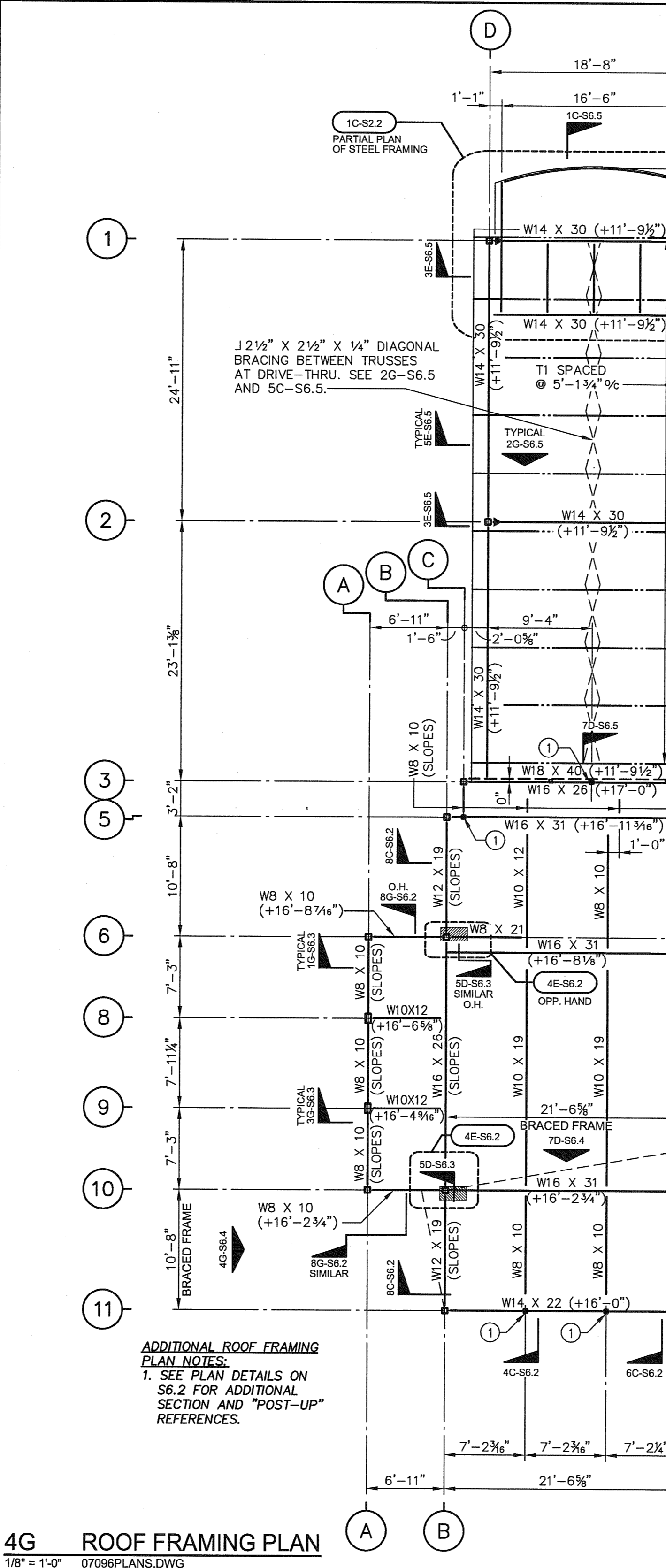
**1F TYPICAL SHEAR PLATE CONNECTION DETAIL**  
 NO SCALE TDST005.DWG



**1G TYPICAL INSULATED PERIMETER COLUMN DETAIL**  
 NO SCALE INSULCOL.DWG

TOP OF CHANNEL ELEVATION	CONTINUOUS PLATE SIZE
+24'-3 3/4"	1/4" X 1'-9"
+20'-8 3/4"	1/4" X 1'-4 1/2"
+18'-5 3/4"	1/4" X 1'-1 1/2"

**4B PARAPET PLATE SCHEDULE**  
 NO SCALE 07096PARAPET SCHD.DWG



**4G ROOF FRAMING PLAN**  
 1/8"=1'-0" 07096PLANS.DWG

- TOP OF STEEL BEAM ELEVATIONS ARE SHOWN THUS (+... ) ON PLAN AND PLAN DETAILS AND ARE REFERENCED ABOVE THE FINISH FLOOR ELEVATION (0'-0") NOTED ON THE FOUNDATION PLAN.
- METAL ROOF DECK SHALL BE 1/2" DEEP, 20 GAUGE, TYPE B, GALVANIZED. FASTEN METAL ROOF DECK TO THE SUPPORTING STEEL STRUCTURE WITH 3/8" PUDDLE WELDS IN A 36/4 PATTERN. PROVIDE A MINIMUM OF (6) #10 TEK SCREW SIDELAP FASTENERS PER SPAN. ROOF DECK SHALL BE INSTALLED USING TWO-SPAN OR THREE-SPAN CONDITIONS. AT CURVED DRIVE-THRU CANOPY AND FRONT ENTRY TOWER FASTEN METAL ROOF DECK TO THE SUPPORTING STEEL STRUCTURE WITH 3/8" PUDDLE WELDS IN A 36/7 PATTERN.
- AREA HATCHED THUS [ ] INDICATES EXTENT OF STEEL PLATE SUPPORTING BRICK. SEE ROOF SECTIONS.
- (1) INDICATES A HSS4 X 4 X 3/8" "POST-UP".  
 (2) INDICATES A HSS6 X 6 X 3/8" "POST-UP".  
 (3) INDICATES A HSS4 X 4 X 3/8" HANGER.
- "POST-UPS" SUPPORT STEEL PARAPET CHANNELS, RESPECTIVELY. SEE ROOF SECTIONS FOR ANCHORAGE OF POST-UPS TO BUILDING ROOF STEEL AS WELL AS "POST-UP" LENGTHS AND CONNECTIONS TO PARAPET CHANNELS.
- EXERCISE EXTREME CAUTION WHEN WELDING TO STEEL BEAMS, JOISTS, AND MISC STEEL FRAMING. ANY/ALL DAMAGE DUE TO OVER BURNING SHALL BE REPAIRED BY THE GENERAL CONTRACTOR AS DIRECTED BY THE ENGINEER AT NO ADDITIONAL COST TO THE OWNER.
- ON PLAN INDICATES 2 1/2" X 2 1/2" X 1/4" DIAGONAL ANGLE BRACING. SEE DETAIL 5C-S6.5 FOR TYPICAL FRAMING.
- VERIFY SIZES AND LOCATIONS OF ALL ROOF OPENINGS, WHETHER INDICATED ON PLAN OR NOT, WITH ARCHITECTURAL, MECHANICAL AND PLUMBING DRAWINGS. ALL OPENINGS THROUGH THE METAL DECK LARGER THAN 6" SQUARE SHALL BE FRAMED WITH THE "TYPICAL FRAMED ROOF OPENING DETAIL".
- ITEMS MARKED THUS [ ] ON PLAN AND PLAN DETAILS INDICATE LOCATIONS OF FULL MOMENT CONNECTIONS FOR THE DEVELOPMENT OF RIGID FRAME ACTION. SEE SECTIONS FOR REQUIREMENTS.
- "T1" INDICATES A "BOW STRING" TRUSS. SEE TRUSS ELEVATIONS ON SHEET S6.5 FOR REQUIREMENTS.
- LOOSE VENEER LINTEL ANGLES SHALL BE PROVIDED AS FOLLOWS:  
 SEAN ANGLE  
 0'-0" < 2'-6" L3 X 3 X 3/8  
 2'-6" < 6'-0" L5 X 5 X 3/8  
 6'-0" < 10'-0" 3/8" X 5 X 8 BENT R (LLV)  
 SEE ARCHITECTURAL DRAWINGS FOR LOCATION. VENEER LINTELS SHALL BEAR A MINIMUM OF 8" EACH END.
- INDICATE LOCATIONS OF DIAGONAL STEEL LATERAL BRACING. SEE FOUNDATION PLAN FOR BRACED FRAME DESIGNATIONS.
- SEE ARCHITECTURAL DRAWINGS FOR INSULATION, ROOF SYSTEM, FLASHING, ETC. AND ALL OTHER FEATURES OF THE ROOF THAT DO NOT PERTAIN TO THE STRUCTURE.
- WOOD NAILERS, COPING, AND FLASHING AT TOP OF PARAPET WALLS NOT SHOWN ON ROOF SECTIONS. ALL NAILERS SHALL BE FASTENED TO TOP OF STEEL WITH 1/2" Ø BOLTS AT 24" O.C. STAGGERED. IN ADDITION, METAL PARAPET STUDS AND SHEATHING NOT SHOWN ON ROOF FRAMING SECTIONS. SEE ARCHITECTURAL DRAWINGS FOR ALL AFOREMENTIONED COMPONENTS. SEE ROOF SECTIONS FOR ADDITIONAL NOTES AND REQUIREMENTS.
- SEE SHEET S6.2 AND S6.3 FOR TYPICAL FRAMING DETAILS.
- SEE SHEET S6.6 FOR GENERAL NOTES.

**7C ROOF FRAMING PLAN NOTES**  
 NO SCALE 07096RF-NTS.DWG

**LAMBERT**  
 ARCHITECTURE + INTERIORS

2400 Reynolda Road  
 Suite 202  
 Winston-Salem, NC 27106  
 Phone 336 777 3657  
 Fax 336 777 3658  
 www.lambertai.com

**ENGINEERED CONCEPTS**

POST OFFICE BOX 35286  
 GREENSBORO, NC 27425-5286  
 OFFICE 336 605 8020  
 FAX 336 605 9392  
 WWW.ENGCONCEPTS.COM

**BB&T**

BRANCH BANK  
 701 VILLAGE WALK DRIVE  
 HOLLY SPRINGS, NC

BB&T PLANON # DEN-0000126

SEAL  
 10/23/2016  
 ROBERT S. KENNER  
 ENGINEER

- OWNER REVIEW
- PRELIMINARY DOCUMENTS
- DESIGN DEVELOPMENT DOCUMENTS
- PERMITTING DOCUMENTS
- BID DOCUMENTS
- CONSTRUCTION DOCUMENTS
- RECORD DOCUMENTS

REVISIONS:

JOB NO: 07096  
 SHEET: S2.2  
 DATE: 10/15/10  
 DRAWN: WJP