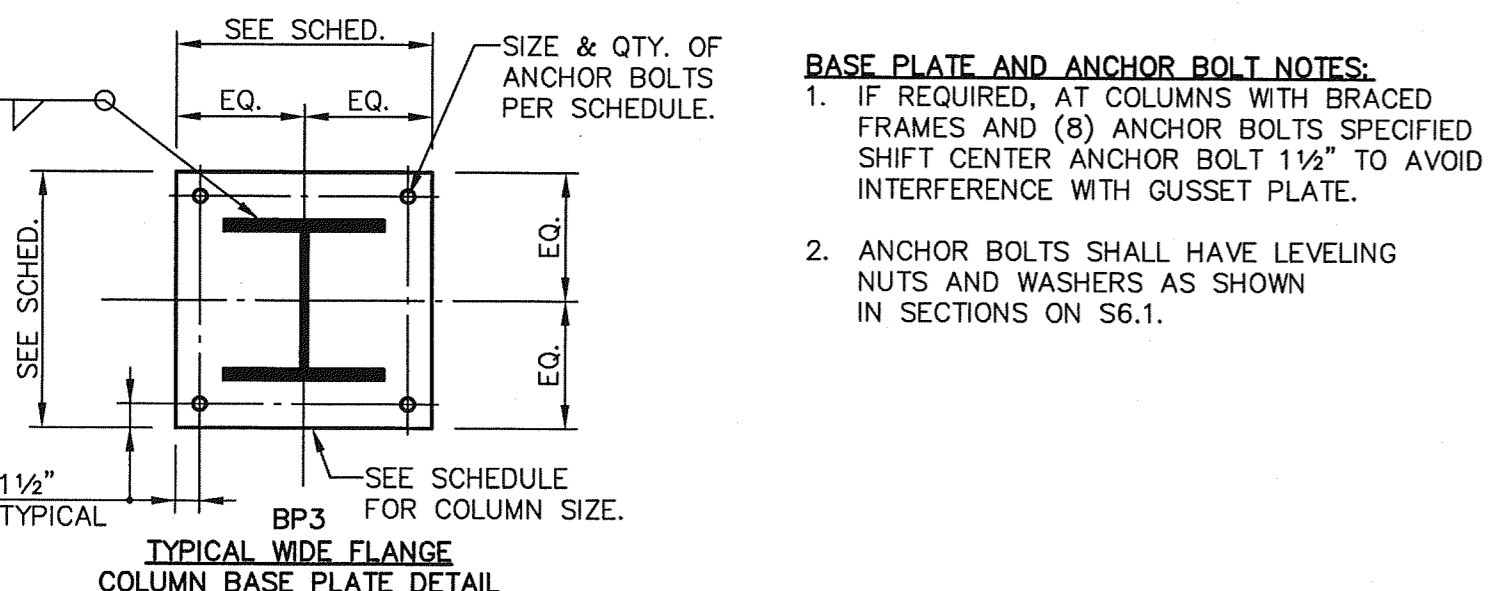
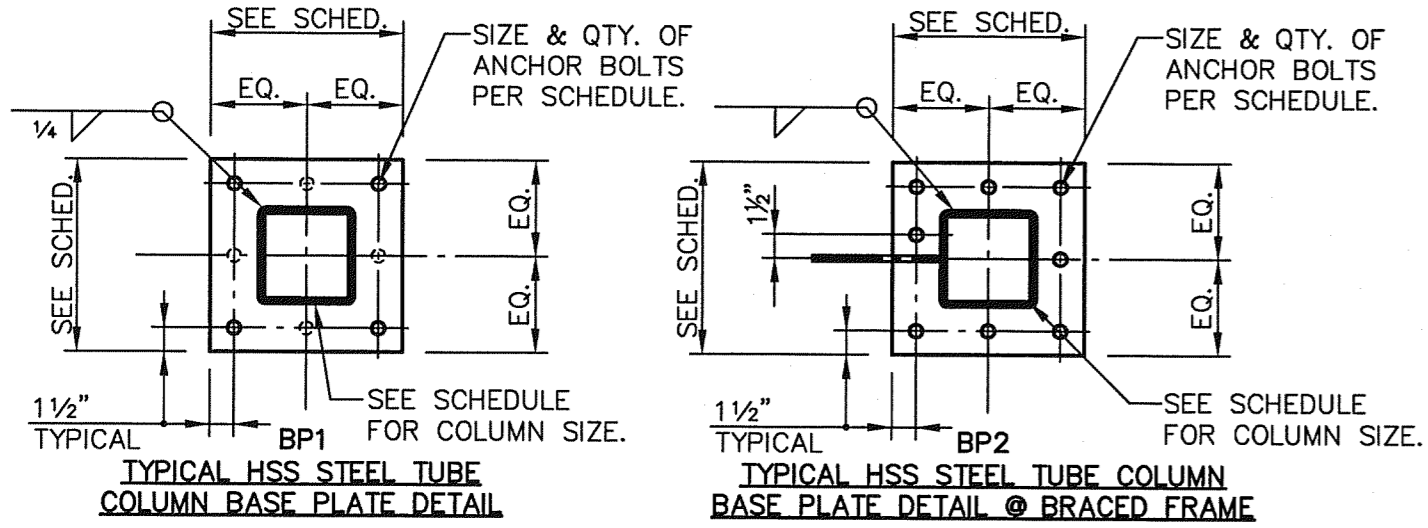


MARK	COLUMN	BASE PLATE	ANCHOR BOLTS	EMBED.	REMARKS
(A)	HSS 3 1/2 X 3 1/2 X 1/4"	SEE 7G-S6.5	SEE 7G-S6.5		
(B)	HSS 3 1/2 X 3 1/2 X 3/8"	3/4" X 12" X 1'-0"	(4) 3/4"Ø	12"	#3
(C)	HSS 6 X 6 X 1/4"	3/4" X 12" X 1'-0"	(4) 3/4"Ø	12"	#3
(D)	HSS 6 X 6 X 1/4"	1" X 12" X 1'-0"	(8) 3/4"Ø	12"	#3
(E)	HSS 6 X 6 X 3/8"	3/4" X 12" X 1'-0"	(4) 3/4"Ø	12"	#3
(F)	HSS 6 X 6 X 3/8"	1" X 12" X 1'-0"	(8) 3/4"Ø	12"	#3
(G)	HSS 6 X 6 X 1/2"	1" X 16" X 1'-4"	(8) 3/4"Ø	16"	#3
(H)	HSS 10 X 6 X 1/2"	3/4" X 12" X 1'-6"	(4) 3/4"Ø	12"	#3
(J)	W10 X 45	3/4" X 16" X 1'-4"	(4) 3/4"Ø	12"	#3
(K)	W10 X 68	3/4" X 16" X 1'-4"	(4) 3/4"Ø	12"	#3

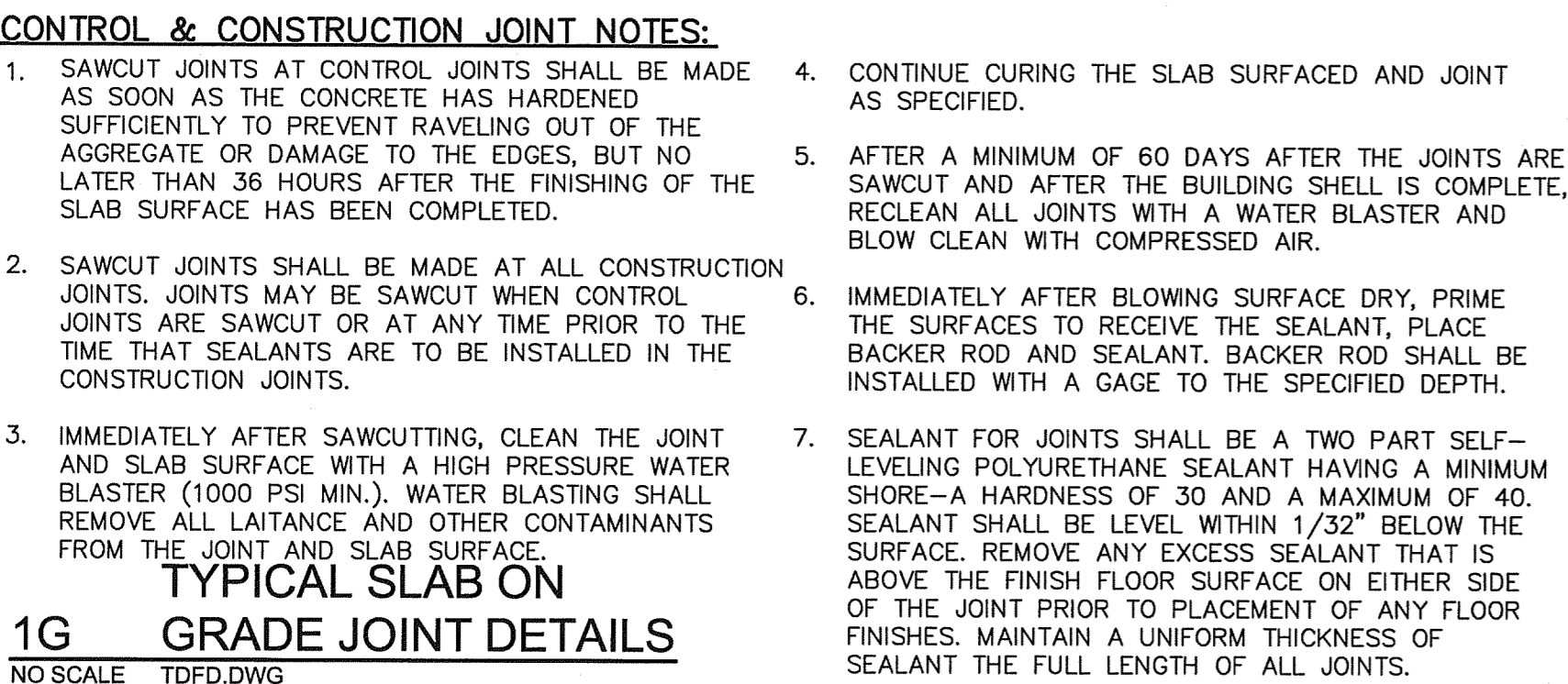
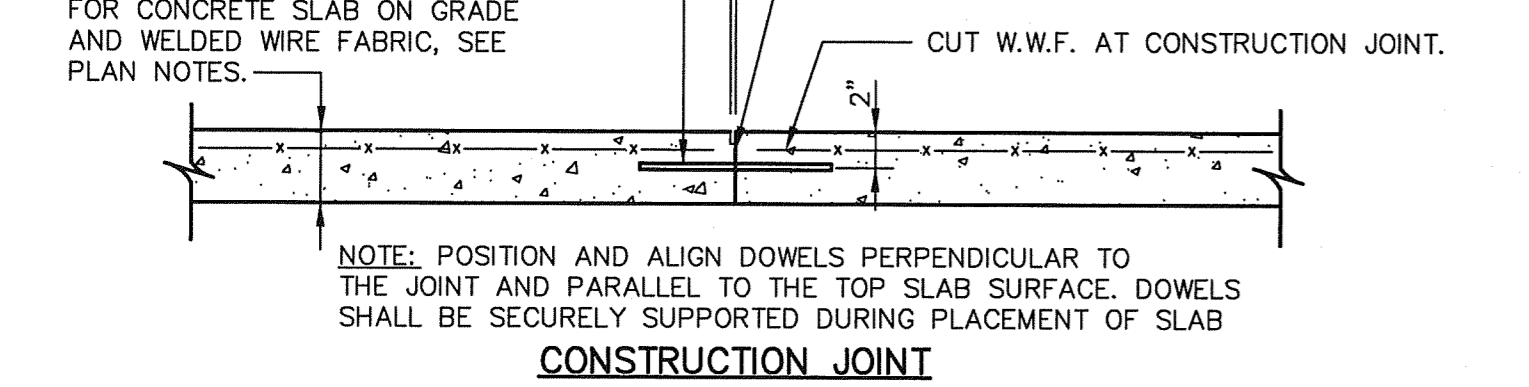
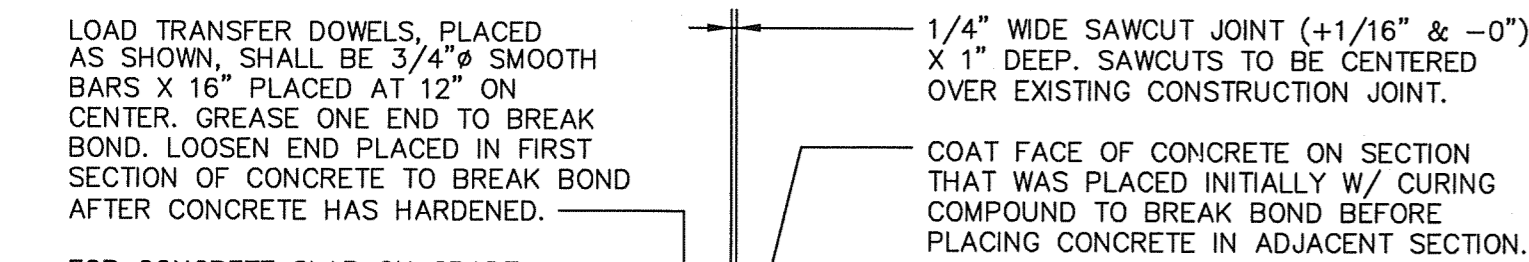
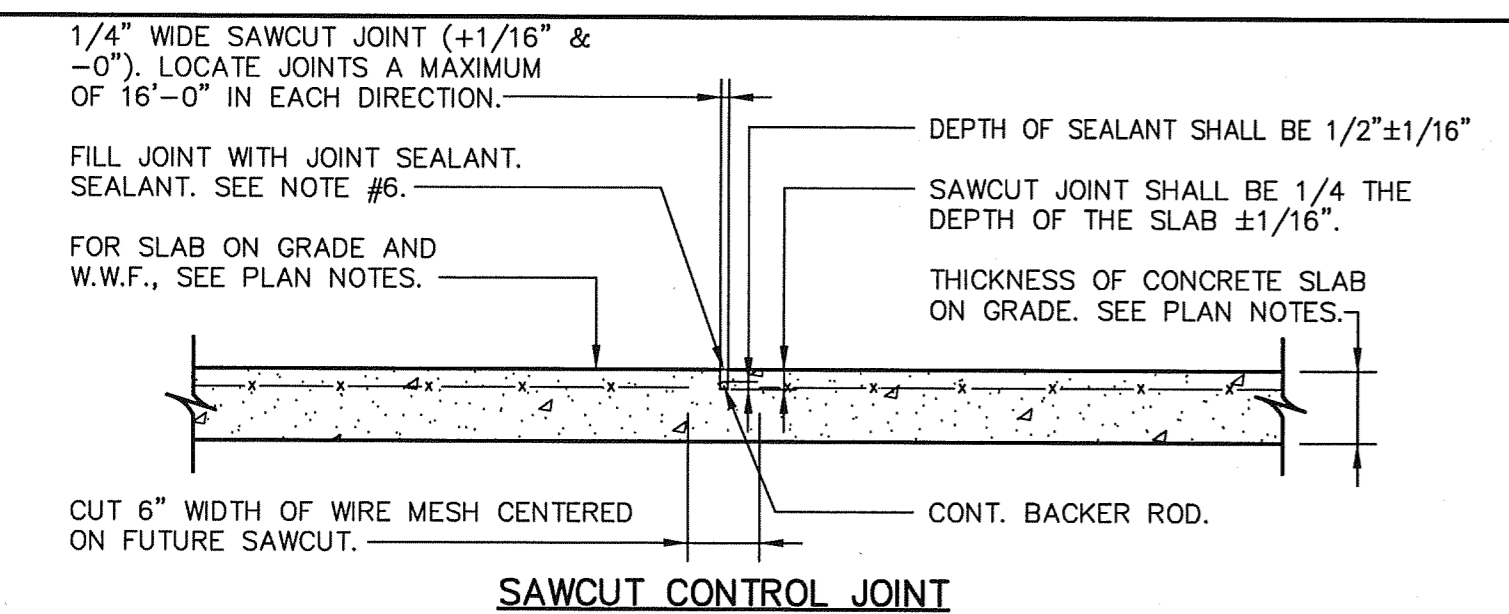
**COLUMN SCHEDULE REMARKS:**

- SEE TYPICAL COLUMN BASE, ISOLATION JOINT, AND FOUNDATION DETAILS ON SHEET S6.1.
- ALL BASE PLATES, ANCHOR BOLTS, AND COLUMNS BELOW TOP OF SLAB ON GRADE SHALL HAVE A 3" MINIMUM CONCRETE COVER.
- SEE TYPICAL BASE PLATE DETAILS 1D-S2.1 FOR BASE PLATE & ANCHOR BOLT DIMENSIONS
- EMBED. = EMBEDMENT OF ANCHOR BOLT INTO CONCRETE FOOTING.



**1D COLUMN SCHEDULE & TYPICAL BASE PLATE DETAILS**

NO SCALE 07096COL-SCHD.DWG



**1G GRADE JOINT DETAILS**

NO SCALE T0FD.DWG

MARK	SIZE	DEPTH	REINFORCING
F40	4'-0" X 4'-0"	1'-4"	(5) #5 EACH WAY BOTTOM
F40B0	4'-0" X 8'-0"	1'-4"	(9) #5 S.W. BOTT. (5) #5 L.W. BOTT.
F50	5'-0" X 5'-0"	1'-4"	(6) #6 EACH WAY BOTTOM
F60	6'-0" X 6'-0"	2'-0"	(7) #7 EACH WAY TOP & BOTTOM
F66	6'-6" X 6'-6"	2'-0"	(8) #7 EACH WAY TOP & BOTTOM
F70	7'-0" X 7'-0"	2'-0"	(8) #7 EACH WAY TOP & BOTTOM
F86	8'-6" X 8'-6"	2'-6"	(10) #7 EACH WAY TOP & BOTTOM
F86A	8'-6" X 8'-6"	3'-0"	(10) #7 EACH WAY TOP & BOTTOM
F90	9'-0" X 9'-0"	3'-0"	(10) #7 EACH WAY TOP & BOTTOM

**4B FOOTING SCHEDULE**

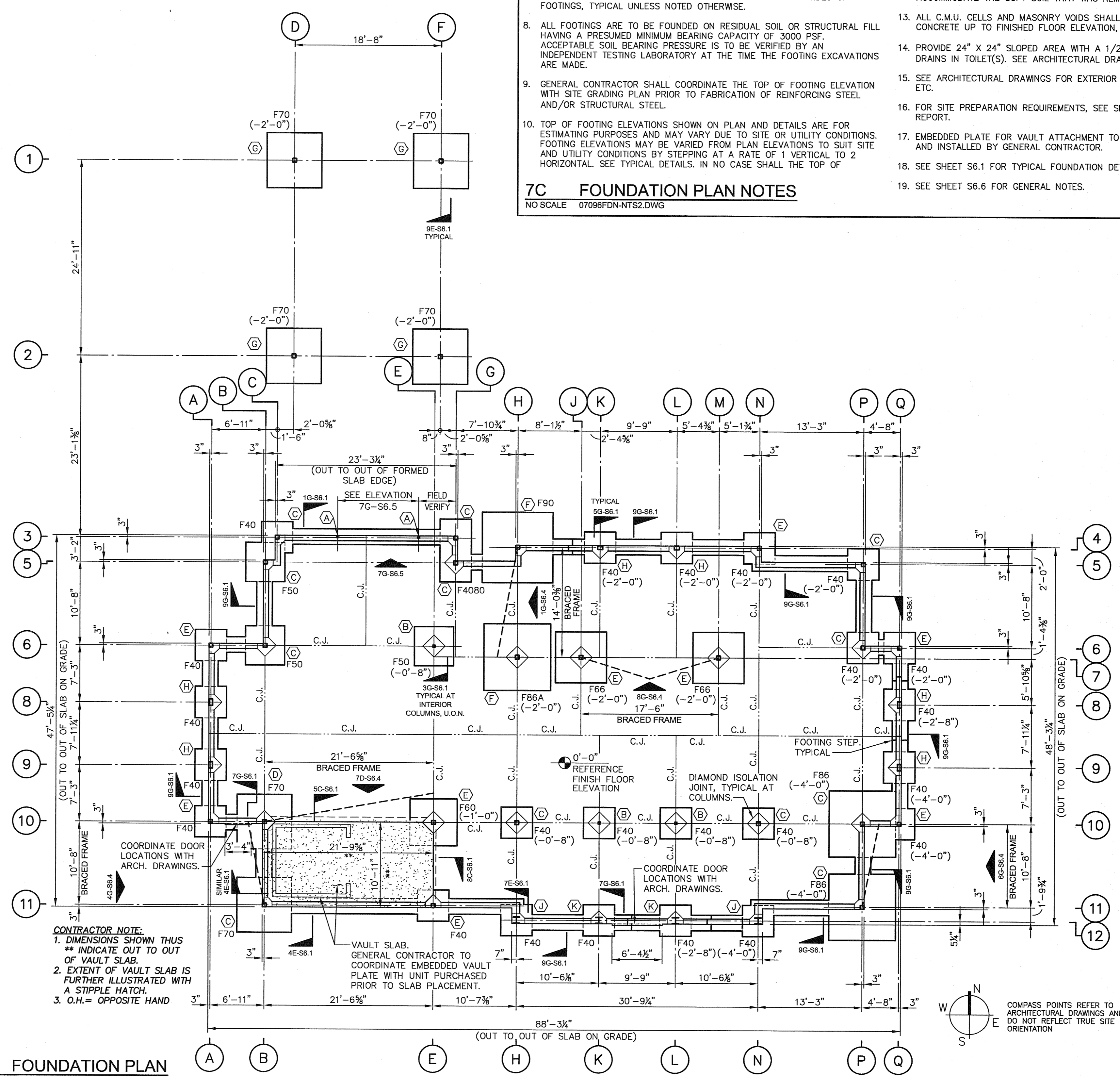
NO SCALE 07096FTG-SCHD.DWG

- ELEVATIONS ARE INDICATED THUS ON PLAN:  
 (•) TOP OF SLAB ON GRADE REFERENCED 0'-0" ON PLAN.  
 (•••) TOP OF FOOTING ELEVATION BELOW REFERENCE ELEVATION 0'-0"
- F\_ ON PLAN INDICATES A SPREAD COLUMN FOOTING. SEE FOOTING SCHEDULE THIS SHEET FOR SIZE & REINFORCING.
- ⊙ INDICATES A STRUCTURAL STEEL COLUMN MARK. SEE COLUMN SCHEDULE THIS SHEET FOR STEEL COLUMN, BASE PLATE SIZES, & ANCHOR BOLT REQUIREMENTS.
- ITEMS SHOWN THUS --- INDICATE LOCATIONS OF DIAGONAL BRACED FRAMES.
- ALL AREAS ON THE PLAN HATCHED THUS --- INDICATE THE EXTENT OF THE VAULT SLAB.
- C.J. ON PLAN AND PLAN DETAIL INDICATES A CONTROL JOINT OR CONSTRUCTION JOINT IN THE SLAB ON GRADE. SEE TYPICAL DETAILS ON SHEET S4.1.
- SEE SECTIONS FOR TYPICAL CONTINUOUS WALL FOOTING REINFORCING. ALL REINFORCING SHALL BE HELD 3" CLEAR FROM BOTTOM AND SIDES OF FOOTINGS, TYPICAL UNLESS NOTED OTHERWISE.
- ALL FOOTINGS ARE TO BE FOUNDED ON RESIDUAL SOIL OR STRUCTURAL FILL HAVING A PRESUMED MINIMUM BEARING CAPACITY OF 3000 PSF. ACCEPTABLE SOIL BEARING PRESSURE IS TO BE VERIFIED BY AN INDEPENDENT TESTING LABORATORY AT THE TIME THE FOOTING EXCAVATIONS ARE MADE.
- GENERAL CONTRACTOR SHALL COORDINATE THE TOP OF FOOTING ELEVATION WITH SITE GRADING PRIOR TO FABRICATION OF REINFORCING STEEL AND/OR STRUCTURAL STEEL.
- TOP OF FOOTING ELEVATIONS SHOWN ON PLAN AND DETAILS ARE FOR ESTIMATING PURPOSES AND MAY VARY DUE TO SITE OR UTILITY CONDITIONS. FOOTING ELEVATIONS MAY BE VARIED FROM PLAN ELEVATIONS TO SUIT SITE AND UTILITY CONDITIONS BY STEPPING AT A RATE OF 1 VERTICAL TO 2 HORIZONTAL. SEE TYPICAL DETAILS. IN NO CASE SHALL THE TOP OF

- FOOTING BE HIGHER THAN THOSE INDICATED ON PLAN. THE TOP OF ALL EXTERIOR FOOTINGS ARE TO BE A MINIMUM OF 1'-0" BELOW FINISH GRADE, UNLESS OTHERWISE NOTED.
- THE BUILDING SLAB ON GRADE IS TO BE A NET 4-INCH THICK CONCRETE SLAB, REINFORCED WITH 6 X 6 - W1.4 X W1.4 WELDED WIRE FABRIC PLACED 1" CLEAR FROM TOP OF SLAB. PLACE SLAB OVER VAPOR BARRIER OVER 4" MINIMUM OF COMPACTED CLEAN WASHED STONE. COORDINATE WITH SOILS REPORT.
- ALL SPREAD AND CONTINUOUS FOOTINGS SHALL BEAR ON ACCEPTABLE UNDISTURBED RESIDUAL SOIL OR STRUCTURAL FILL. EXCAVATIONS FOR FOOTINGS SHALL BE MAINTAINED IN A DRY CONDITION UNTIL CONCRETE IS PLACED. WHENEVER POSSIBLE, THE EXCAVATION SHALL BE MADE, THE BEARING SURFACE INSPECTED, AND THE CONCRETE PLACED THE SAME DAY. IF EXCAVATIONS MUST REMAIN OPEN OVERNIGHT OR IF RAINFALL OR GROUNDWATER INTRUSION IS IMMINENT BEFORE THE PLACEMENT OF CONCRETE, A 2-INCH THICK "MUD-MAT" OF LEAN CONCRETE SHALL BE PLACED IN THE EXCAVATION AFTER OVER-EXCAVATING 2-INCHES IN DEPTH. ANY SOIL WHICH IS SOFTENED DUE TO MOISTURE EXPOSURE SHALL BE UNDERCUT TO FIRM SOIL AND THE DEPTH OF FOOTING INCREASED TO ACCOMMODATE THE SOFT SOIL THAT WAS REMOVED.
- ALL C.M.U. CELLS AND MASONRY VOIDS SHALL BE FILLED SOLID WITH CONCRETE UP TO FINISHED FLOOR ELEVATION, TYPICAL.
- PROVIDE 24" X 24" SLOPED AREA WITH A 1/2" MINIMUM SLOPE AT FLOOR DRAINS IN TOILET(S). SEE ARCHITECTURAL DRAWINGS, IF APPLICABLE.
- SEE ARCHITECTURAL DRAWINGS FOR EXTERIOR CONCRETE PADS, DRIVEWAYS, ETC.
- FOR SITE PREPARATION REQUIREMENTS, SEE SPECIFICATIONS & SOILS REPORT.
- EMBEDDED PLATE FOR VAULT ATTACHMENT TO BE FURNISHED BY OWNER AND INSTALLED BY GENERAL CONTRACTOR.
- SEE SHEET S6.1 FOR TYPICAL FOUNDATION DETAILS.
- SEE SHEET S6.6 FOR GENERAL NOTES.

**7C FOUNDATION PLAN NOTES**

NO SCALE 07096FDN-NTS2.DWG



**4G FOUNDATION PLAN**

1/8" = 1'-0" 07096PLANS.DWG

**LAMBERT**  
ARCHITECTURE + INTERIORS

2400 Reynolda Road  
Suite 202  
Winston-Salem, NC 27106  
Phone 336.777.3657  
Fax 336.777.3658  
www.lambertai.com

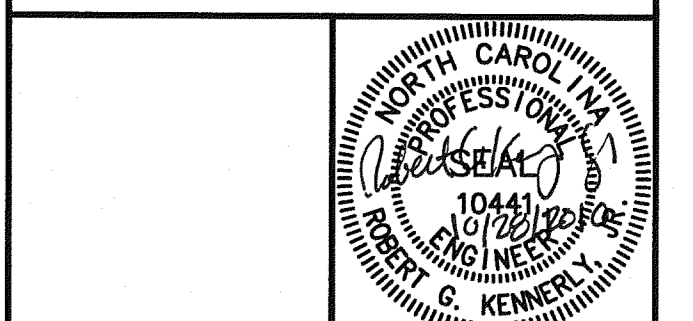
**ENGINEERED CONCEPTS**

POST OFFICE BOX 35286  
GREENSBORO, NC 27425-5286  
OFFICE 336.605.8020  
FAX 336.605.9392  
WWW.ENGCONCEPTS.COM

**BB&T**

BRANCH BANK  
701 VILLAGE WALK DRIVE  
HOLLY SPRINGS, NC

BB&T PLANON # DEN-00000126



- OWNER REVIEW
- PRELIMINARY DOCUMENTS
- DESIGN DEVELOPMENT DOCUMENTS
- PERMITTING DOCUMENTS
- BID DOCUMENTS
- CONSTRUCTION DOCUMENTS
- RECORD DOCUMENTS

REVISIONS:

JOB NO: 07096  
SHEET **S2.1**  
DATE: 10/15/10  
DRAWN: WJP