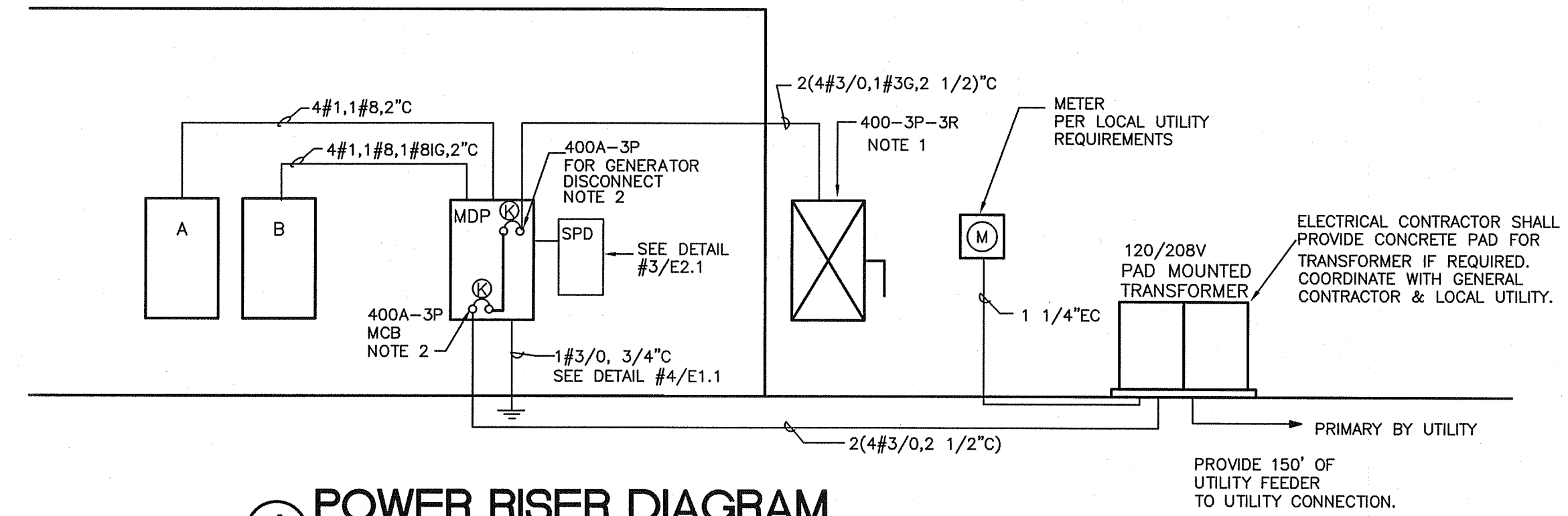


LIGHT FIXTURE SCHEDULE

| MARK | DESCRIPTION | LAMPS | TOTAL FIXTURE WATTAGE | BALLASTS | VOLTAGE | MANUFACTURER (NO SUBSTITUTIONS) | DETAILS |
|------|--|-------------------------|-----------------------|---|---------|--|--|
| H | LED EXIT SIGN | LED | 5W | | 120V | DUAL-LITE: CV3RAW | POLYCARBONATE HOUSING WITH SELF-CONTAINED POWER PACK FOR 90MIN OPERATION. NICAD BATTERY. WHITE HOUSING. RED LETTERS. |
| K | 2'X2' HID LAY-IN | 1 M250/U | 290W | HIGH POWER FACTOR | 120V | HUBBELL: SDH-22-M-250-G-S-FS-IP-QT-DL | PROVIDE OPTIONAL DROPPED PYRAMIDAL DIFFUSER LENS. INSTALL WITH 1 ADDITIONAL GASKET TO LIMIT INSECT INTRUSION. |
| L | METAL HALIDE WALL PACK | 1 M100/C/U/MED | 120W | HIGH POWER FACTOR | 120V | KIM: WD14D2100MH1200BPA30H5 | COORDINATE W/ ARCHITECT TO MISS FASCIA, FURNISH WITH P.E. CELL. WET LOCATION LABEL. FINISH: DARK BRONZE |
| N | PENDANT LIGHT | CF42DT/E/835 | 50W | ELECTRONIC | 120V | SCOTT ARCHITECTURAL LIGHTING: S2080-C42T-PC-120 | 24" STEM LENGTH (COORDINATE FINISH W/OWNER) |
| P | RECESSED FLUORESCENT DOWNLIGHT | CF26DT/E/835 | 30W | OSRAM SYLVANIA QUICKTRONIC Q1X26/CF BALLAST. | 120V | KURT VERSEN P926 EDISON PRICE TRP 26/6-COL-WF INDY 616R-261-SA-FF | 6" APERTURE VERTICALLY MOUNTED LAMP. ALZAK REFLECTOR. |
| P2 | RECESSED FLUORESCENT LENSED WALLWASH | CF26DT/E/835 | 30W | OSRAM SYLVANIA QUICKTRONIC Q1P1X26/32/42CF/UNIV BALLAST. | 120V | ARCHITEKTUR CFTW626EB-ST612 PORTFOLIO C6926E-6191LI OMEGA OM61H26PLTW-W-CS | 6" APERTURE. ACRYLIC SPREAD LENS. HORIZONTALLY MOUNTED LAMP. ALZAK REFLECTOR. |
| R | RECESSED METAL HALIDE DOWNLIGHT | 1 M250/U | 290W | MAGNETIC BALLAST | 120V | PRESCOLITE: 1061M10-250MHFE-836L | 10" APERTURE. VERTICALLY MOUNTED LAMP. CLEAR ALZAK REFLECTOR. DAMP LOCATION LABEL. |
| RT4 | 2X4 RECESSED FLUORESCENT | 2-FP28/835/PM/ECO 3500K | 58W | OSRAM SYLVANIA QTP2X28T5/UNV PS1155C BALLAST FACTOR SHALL BE 1.15 | 120V | LITHONIA 2RT5-28T5-MVOLT-GE8115-LPM835P | WHITE FINISH. |
| RTE | 2X4 RECESSED FLUORESCENT | 2-FP28/835/PM/ECO 3500K | 58W | OSRAM SYLVANIA QTP2X28T5/UNV PS1155C BALLAST FACTOR SHALL BE 1.15 | 120V | LITHONIA 2RT5-28T5-MVOLT-GE8115-LPM835P-EL14 | WHITE FINISH. EMERG. BATTERY PACK. LIGHT TO BURN CONTINUOUSLY. |
| RT5 | 2X4 RECESSED FLUORESCENT | 2-FP28/835/PM/ECO 3500K | 58W | OSRAM SYLVANIA QS2X28T5/UNV PS1155C BALLAST FACTOR SHALL BE 1.15 | 120V | LITHONIA 2RT5-28T5-MVOLT-GE8115-LPM835P | WHITE FINISH. STEP DIMMING BALLAST AS SPECIFIED. |
| S | EXTERIOR SCONCE | CF42DT/E/835 | 50W | HIGH POWER FACTOR | 120V | HINKLEY LIGHTING 2285MT | SOLID BRASS HOUSING. ETCHED GLASS. METRO BRONZE FINISH. |
| OA | TWO HEADS METAL HALIDE MOUNTED ATOP 32" ALUM. POLE. AT 90° | 2-400W MH | 918W | HIGH POWER FACTOR | 208V | G.E.-DSMT-40M-0-A-1-G-MC3-DB | TWO DECASHELD WITH 32"-0" SQUARE STRAIGHT ALUMINUM POLE. FINISH: DARK BRONZE |
| | EXTERIOR LED EMERGENCY LIGHT | LED | 5.6W | N/A | 12V | CHLORIDE SYSTEMS PTCBKO | POLYCARBONATE CONSTRUCTION HOUSING, BLACK FINISH FOR FIXTURES INSTALLED ON BRICK VENEER; WHITE FINISH WHEN ON PRE-CAST PANELS. WET LABEL. MOUNT @ 8' ABOVE FINISH FLOOR. SUPPLY WITH REMOTE MOUNTED EMERGENCY BATTERY PACK FOR 90 MIN OPERATION. MOUNT @ 18" ABOVE FINISH GRADE. COORDINATE LOCATIONS WITH PRECAST PANEL CONTRACTOR. |
| | EMERGENCY LIGHT | 2-7.2W HALOGEN | 20W | | 120V | SURE-LITES CU-2 | POLYCARBONATE HOUSING WITH SELF-CONTAINED POWER PACK FOR 90MIN OPERATION. WHITE HOUSING. NICAD BATTERY. |

FIXTURE NOTES:

- ALL FLUORESCENT LAMPS SHALL BE TO OCTRON 3500 K AND OF THE SAME MANUFACTURER, UNLESS OTHERWISE NOTED. ALL FLUORESCENT BALLASTS SHALL BE ELECTRONIC BY MANUFACTURER SPECIFIED, (OR APPROVED EQUAL), UNLESS OTHERWISE NOTED.
- SUBSTITUTIONS ARE NOT ACCEPTABLE. REVIEW OF ANY SUBSTITUTIONS WILL BE BILLABLE AT THE ENGINEERS HOURLY RATE.
- ALL SINGLE SWITCHED FIXTURES SHALL HAVE A STANDARD NON-STEPPED BALLAST. ALL MULTI-SWITCHED FIXTURES BE STEPPED BALLAST AS SPECIFIED.
- SEE ARCHITECTURAL REFLECTED CEILING PLAN FOR EXACT FIXTURE LOCATIONS.
- ALIGN ALL HORIZONTAL FLUORESCENT DOWNLIGHTS SO THAT THE PL LAMPS ARE ALIGNED IN THE SAME DIRECTION.



| PANEL MDP | | | | | | | | | | | |
|------------------|--------------|-------------|------|----------|--------|------------|-------|-----------------|-----------------|------------------|------------|
| 120/208 VOLTS | | 3 | 4 | WIRE | | TYPE | | NQOD | | 22,000 AIC | |
| SURFACE MOUNTING | | MAINS | | 400A MCB | | SEE NOTE 2 | | | | | |
| LOAD (KVA) | LOAD SERVED | WIRE | TRIP | FRAME | CKT NO | CKT NO | FRAME | TRIP | WIRE | LOAD SERVED | LOAD (KVA) |
| 0.0 | SPD | 4 | 60 | QOB | 1 | 2 | QOB | 10 | | HP-1 | 21.2 |
| | | 4 | 60 | QOB | 3 | 4 | QOB | 30 | 10 | | |
| | | 4 | 60 | QOB | 5 | 6 | QOB | 10 | | | |
| | | 1 | 100 | QOB | 7 | 8 | QOB | 15 | 12 | IDU-1 | 0.1 |
| 24.6 | PANEL A | 1 | 100 | QOB | 9 | 10 | QOB | 12 | | | |
| | | 1 | 100 | QOB | 11 | 12 | QOB | 15 | 12 | IDU-2 | 0.2 |
| | | 1 | 100 | QOB | 13 | 14 | QOB | 12 | | | |
| 23.8 | PANEL B | 1 | 100 | QOB | 15 | 16 | QOB | 15 | 12 | IDU-3 | 0.3 |
| | | 1 | 100 | QOB | 17 | 18 | QOB | 12 | | | |
| 3.0 | ATM | 2 | 100 | QOB | 19 | 20 | QOB | 15 | 12 | IDU-4 | 0.3 |
| | | 2 | 100 | QOB | 21 | 22 | QOB | 12 | | | |
| 2.5 | WATER HEATER | 10 | 30 | QOB | 23 | 24 | QOB | 15 | 12 | IDU-5 | 0.3 |
| 0.1 | BC-1 | 12 | 15 | QOB | 25 | 26 | QOB | 12 | | | |
| | | 12 | 15 | QOB | 27 | 28 | QOB | 15 | 12 | IDU-6 | 0.3 |
| 0.0 | SPARE | - | - | QOB | 29 | 30 | QOB | 12 | | | |
| 0.0 | SPACE ONLY | - | - | QOB | 31 | 32 | QOB | - | - | SPACE ONLY | 0.0 |
| 0.0 | SPACE ONLY | - | - | QOB | 33 | 34 | QOB | - | - | SPACE ONLY | 0.0 |
| 0.0 | SPACE ONLY | - | - | QOB | 35 | 36 | QOB | - | - | SPACE ONLY | 0.0 |
| 0.0 | SPACE ONLY | - | - | QOB | 37 | 38 | QOB | - | - | SPACE ONLY | 0.0 |
| 0.0 | SPACE ONLY | - | - | QOB | 39 | 40 | QOB | 400 | 2(4#3/0,2 1/2") | GENERATOR-NOTE 2 | 0.0 |
| 0.0 | SPACE ONLY | - | - | QOB | 41 | 42 | QOB | 2(4#3/0,2 1/2") | | | 0.0 |
| | LOAD | | | | | | | | | | |
| | LIGHTS | 15.5 | | | | | | | | | |
| | HEATING | 0.0 | | | | | | | | | |
| | COOLING | 8.6 | | | | | | | | | |
| | VENTILATION | 2.6 | | | | | | | | | |
| | MOTORS | 0.0 | | | | | | | | | |
| | MISC | 13.0 | | | | | | | | | |
| | RECEPTACLES | 19.8 | | | | | | | | | |
| | WATER HEATER | 2.5 | | | | | | | | | |
| | ATM | 3.0 | | | | | | | | | |
| | SPARE | 0.0 | | | | | | | | | |
| | TOTAL | 65.0 | | | | | | | | | |

| PANEL A | | | | | | | | | | | |
|------------------|-----------------------|-------------|------|----------|--------|--------|-------|------|------|---------------------|------------|
| 120/208 VOLTS | | 3 | 4 | WIRE | | TYPE | | NQOD | | 22,000 AIC | |
| SURFACE MOUNTING | | MAINS | | 100A MLO | | | | | | | |
| LOAD (KVA) | LOAD SERVED | WIRE | TRIP | FRAME | CKT NO | CKT NO | FRAME | TRIP | WIRE | LOAD SERVED | LOAD (KVA) |
| 1.2 | RCPT | 12 | 20 | QOB | 1 | 2 | QOB | 30 | 10 | REMOTE TELLER * | 1.5 |
| 1.2 | RCPT | 12 | 20 | QOB | 3 | 4 | QOB | 30 | 10 | REMOTE TELLER * | 1.5 |
| 1.2 | RCPT | 12 | 20 | QOB | 5 | 6 | QOB | 30 | 10 | REMOTE TELLER * | 1.5 |
| 1.2 | MULTI-FUNCTION DEVICE | 12 | 20 | QOB | 7 | 8 | QOB | 20 | - | SPARE | 0.0 |
| 0.8 | FAX | 12 | 20 | QOB | 9 | 10 | QOB | 20 | 12 | TELLER LINE | 0.8 |
| 1.2 | RCPT | 12 | 20 | QOB | 11 | 12 | QOB | 20 | 12 | TELLER LINE | 0.8 |
| 1.2 | RCPT | 12 | 20 | QOB | 13 | 14 | QOB | 20 | 12 | TELLER LINE | 0.8 |
| 1.0 | EW | 12 | 20 | QOB | 15 | 16 | QOB | 20 | 10 | SHARPE TELLER | 1.0 |
| 1.2 | RCPT-REFRIG. | 12 | 20 | QOB | 17 | 18 | QOB | 20 | 12 | VAULT RECEPTACLE | 1.2 |
| 1.2 | RCPT. | 12 | 20 | QOB | 19 | 20 | QOB | 30 | 10 | SHARPE TELLER | 1.0 |
| 0.3 | TIMER | 12 | 20 | QOB | 21 | 22 | QOB | 20 | 12 | RCPT. - TELLERLINE | 0.8 |
| 0.8 | DEDICATED RCPT | 12 | 20 | QOB | 23 | 24 | QOB | 20 | 12 | RCPT. | 1.2 |
| 0.8 | DEDICATED RCPT | 12 | 20 | QOB | 25 | 26 | QOB | 20 | 12 | RCPT. | 1.2 |
| 0.8 | DEDICATED RCPT | 12 | 20 | QOB | 27 | 28 | QOB | 20 | 12 | NIGHT DEPOSIT | 0.8 |
| 0.8 | DEDICATED RCPT. | 12 | 20 | QOB | 29 | 30 | QOB | 20 | 12 | RCPT. - DEAL DRAWER | 1.2 |
| 0.1 | FAN F-4 | 12 | 20 | QOB | 31 | 32 | QOB | 20 | 12 | RCPT. | 1.2 |
| 0.0 | SPARE | - | - | QOB | 33 | 34 | QOB | 20 | 12 | FAX | 0.5 |
| 0.5 | IRRIGATION | 12 | 20 | QOB | 35 | 36 | QOB | 20 | - | SPARE | 0.0 |
| 0.0 | SPARE | - | - | QOB | 37 | 38 | QOB | 20 | - | SPARE | 0.0 |
| 0.0 | SPARE | - | - | QOB | 39 | 40 | QOB | 20 | - | SPARE | 0.0 |
| 0.0 | SPARE | - | - | QOB | 41 | 42 | QOB | 20 | - | SPARE | 0.0 |
| | LOAD | | | | | | | | | | |
| | LIGHTS | 0.0 | | | | | | | | | |
| | HEATING | 0.0 | | | | | | | | | |
| | COOLING | 0.0 | | | | | | | | | |
| | VENTILATION | 0.1 | | | | | | | | | |
| | MOTORS | 0.0 | | | | | | | | | |
| | KITCHEN | 0.0 | | | | | | | | | |
| | RECEPTACLES | 17.8 | | | | | | | | | |
| | WATER HEATER | 0.0 | | | | | | | | | |
| | MISC | 6.7 | | | | | | | | | |
| | SPARE | 0.0 | | | | | | | | | |
| | TOTAL | 24.6 | | | | | | | | | |

| PANEL B | | | | | | | | | | | |
|------------------|----------------------------|-------|------|----------|--------|--------|-------|------|------|-----------------|------------|
| 120/208 VOLTS | | 3 | 4 | WIRE | | TYPE | | NQOD | | 22,000 AIC | |
| SURFACE MOUNTING | | MAINS | | 100A MLO | | | | | | | |
| LOAD (KVA) | LOAD SERVED | WIRE | TRIP | FRAME | CKT NO | CKT NO | FRAME | TRIP | WIRE | LOAD SERVED | LOAD (KVA) |
| 1.1 | LIGHTING | 12 | 20 | QOB | 1 | 2 | QOB | 20 | 8 | POLE LTG | 2.8 |
| 1.4 | LIGHTING | 12 | 20 | QOB | 3 | 4 | QOB | 8 | | | |
| 1.0 | LIGHTING | 12 | 20 | QOB | 5 | 6 | QOB | 20 | 8 | POLE LTG | 1.8 |
| 1.0 | EXIT/EMERGENCY LIGHTING ** | 12 | 20 | QOB | 7 | 8 | QOB | 8 | | | |
| 0.0 | SPARE | - | - | QOB | 9 | 10 | QOB | 20 | 8 | POLE LTG | 1.8 |
| 1.0 | LIGHTING - EXTERIOR | 12 | 20 | QOB | 11 | 12 | QOB | 8 | | | |
| 0.5 | LTG. CONT. | 12 | 20 | QOB | 13 | 14 | QOB | 20 | 8 | SITE SIGN | 1.0 |
| 1.5 | CANOPY LTG. | 12 | 20 | QOB | 15 | 16 | QOB | 20 | - | SPARE | 0.0 |
| 0.9 | CANOPY LTG. | 12 | 20 | QOB | 17 | 18 | QOB | 20 | - | SPARE | 0.0 |
| 1.2 | OPEN/CLOSE LIGHTING | 12 | 20 | QOB | 19 | 20 | QOB | 20 | - | SPARE | 0.0 |
| 1.2 | SIGN | 12 | 20 | QOB | 21 | 22 | QOB | 20 | 12 | RECEPTACLE | 0.8 |
| 1.2 | SIGN | 12 | 20 | QOB | 23 | 24 | QOB | 20 | 12 | RECEPTACLE | 0.4 |
| 1.2 | SIGN | 12 | 20 | QOB | 25 | 26 | QOB | 20 | 12 | RECEPTACLE - IG | 0.4 |
| 1.2 | SIGN | 12 | 20 | QOB | 27 | 28 | QOB | 20 | 12 | RECEPTACLE - IG | 0.4 |
| 0.0 | SPARE | - | - | QOB | 29 | 30 | QOB | 20 | - | SPARE | 0.0 |
| 0.0 | SPACE ONLY | - | - | QOB | 31 | 32 | QOB | - | - | SPACE ONLY | 0.0 |
| 0.0 | SPACE ONLY | - | - | QOB | 33 | 34 | QOB | - | - | SPACE ONLY | 0.0 |
| 0.0 | SPACE ONLY | - | - | QOB | 35 | 36 | QOB | - | - | SPACE ONLY | 0.0 |
| 0.0 | SPACE ONLY | - | - | QOB | 37 | 38 | QOB | - | - | SPACE ONLY | 0.0 |
| 0.0 | SPACE ONLY | - | - | QOB | 39 | 40 | QOB | - | - | SPACE ONLY | 0.0 |
| 0.0 | SPACE ONLY | - | - | QOB | 41 | 42 | QOB | - | - | SPACE ONLY | 0.0 |
| | LOAD | | | | | | | | | | |
| | LIGHTS | 15.5 | | | | | | | | | |
| | HEATING | 0.0 | | | | | | | | | |
| | COOLING | 0.0 | | | | | | | | | |
| | VENTILATION | 0.0 | | | | | | | | | |
| | MOTORS | 0.0 | | | | | | | | | |