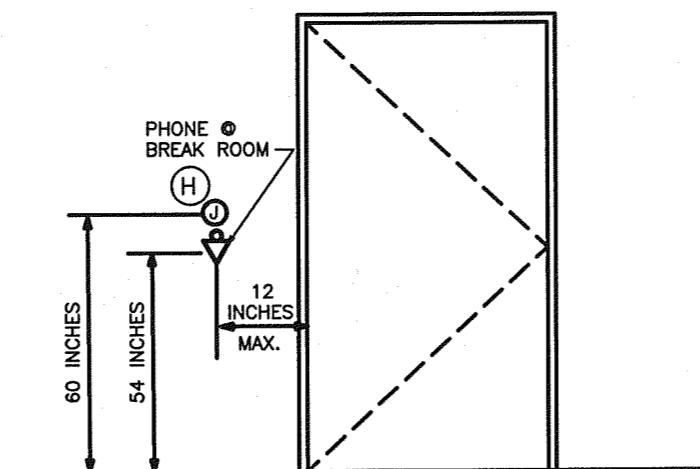


2 TELLER WINDOW - ELEVATION
NTS

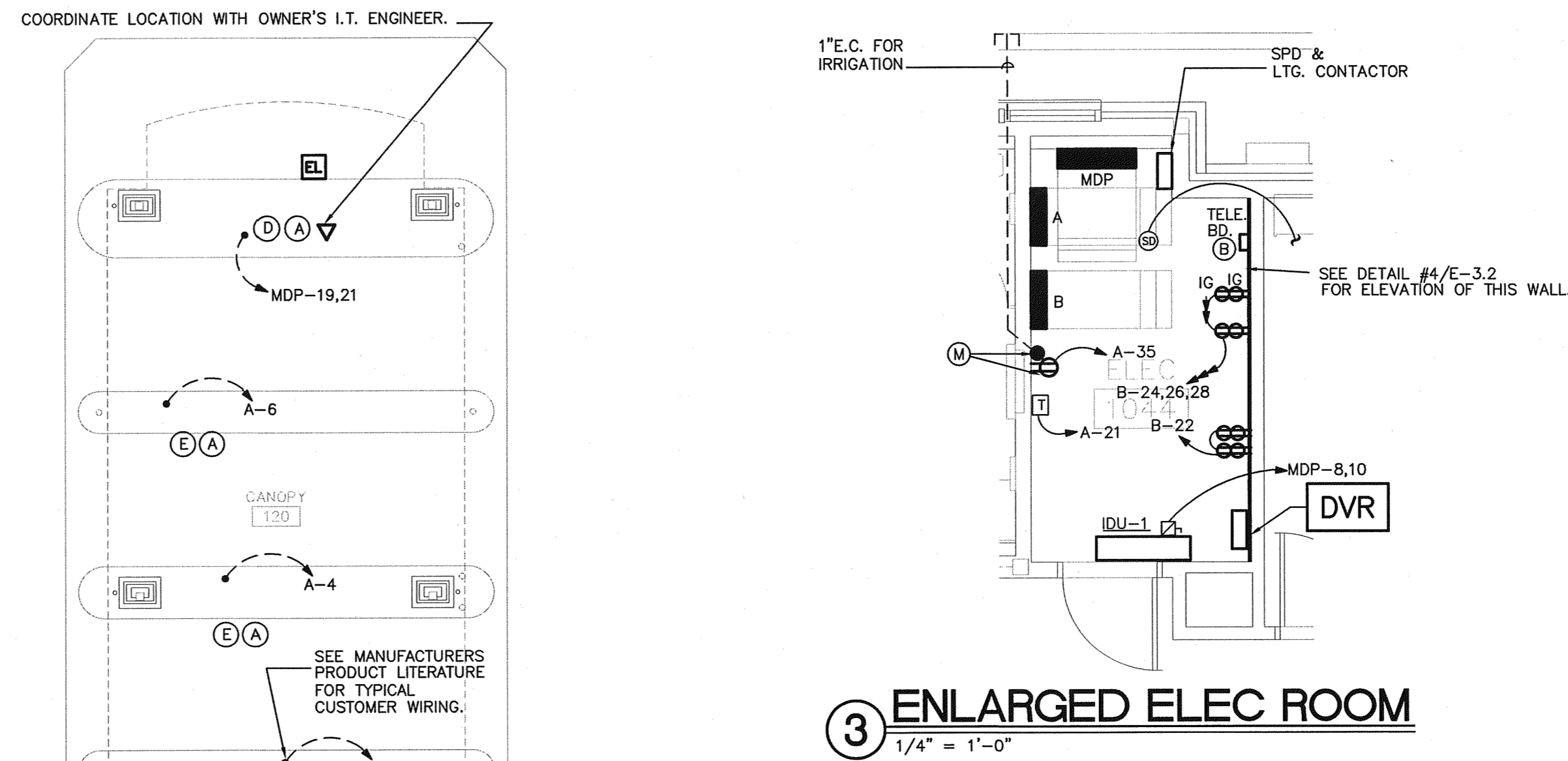
HVAC SCHEDULE					
DEVICE	VOLT.	WATT	DISCONNECT		
F-1	120V-1Ø	129	CONTROL BY TIMER		
F-2	120V-1Ø	50	CONTROL BY TIMER		
F-3	120V-1Ø	50	CONTROL BY TIMER		
F-4	120V-1Ø	121	MANUAL MOTOR STARTER W/OL'S		
SYMBOL	COMPRESSOR KW	FAN KW	ELECTRICAL DATA		
HP-1	9.5	2 @ 0.92	59	100	208V-3Ø 100/F100-3P-3R
SYMBOL	VOLTAGE	FAN W	MCA	FUSE	DISCONNECT
IDU-1	208V-1Ø	30	0.34	15	30/F15-2P
IDU-2	208V-1Ø	85	0.77	15	30/F15-2P
IDU-3	208V-1Ø	95	1.07	15	30/F15-2P
IDU-4	208V-1Ø	95	0.87	15	30/F15-2P
IDU-5	208V-1Ø	95	0.87	15	30/F15-2P
IDU-6	208V-1Ø	95	0.87	15	30/F15-2P
SYMBOL	VOLTAGE	ELECTRICAL DATA			
BC-1	208V-1Ø	0.54	0.112	30/F15-1P	

GENERAL NOTES:

- (A) CONDUIT TO REMOTE TELLER/ATM SHALL BE RUN BELOW FINISHED GRADE. COORDINATE WITH OWNER PROVIDED BANK EQUIPMENT SHOP DRAWINGS.
- (B) PROVIDE 3/4" FIRE-TREATED "B" GRADE PLYWOOD BOARD 8 FOOT HIGH, WALL TO WALL, FOR TELEPHONE/DATA EQUIPMENT. PAINT (WALL TO WALL) WHITE. DISTRIBUTION: PROVIDE 1 #6 CU TO MAIN GROUND.
- (C) 120V POWER TO BOX ALREADY BUILT INTO VAULT PANEL.
- (D) FOUR 1" CONDUITS AND ONE 1 1/2" CONDUIT TO ELEC/COMM. ROOM.
- (E) TWO (2) - 1" CONDUITS FOR REMOTE TELLER. WIRING BY OTHERS.
- (F) INSTALL JBOX AT 54" A.F.F. FOR NIGHT DEPOSITORY - COORDINATE WITH INSTALLATION OF DEPOSITORY. CONTROLLED BY PHOTOCELL. PROVIDE 1" FLEXIBLE CONDUIT FROM JBOX TO TOP OF NIGHT DEPOSIT.
- (G) SEE DETAIL #1 SHEET E-3.2.
- (H) PROVIDE JUNCTION BOX FOR ALARM INDICATOR LIGHT. RUN 3/4" EC TO ABOVE CEILING SPACE. SEE CABLING PLAN AND NOTES FOR ADDITIONAL INFORMATION.
- (K) COORDINATE W/CABLING PLAN & NOTES.
- (L) PROVIDE 30A TWISTLOCK (MODEL 5M-30) POWER FOR POINT TO POINT UNIT (BY OWNER). COORDINATE DEVICE WITH OWNER AND MANUFACTURER.
- (M) PROVIDE A RECEPTACLE FOR IRRIGATION SYSTEM BOX. COORDINATE WITH IRRIGATION SYSTEM PROVIDER FOR BOX LOCATION.
- (N) PROVIDE JUNCTION BOX FOR ALARM KEYPAD. RUN 3/4" EC TO ABOVE CEILING SPACE. SEE CABLING PLAN AND FOR ADDITIONAL INFORMATION.

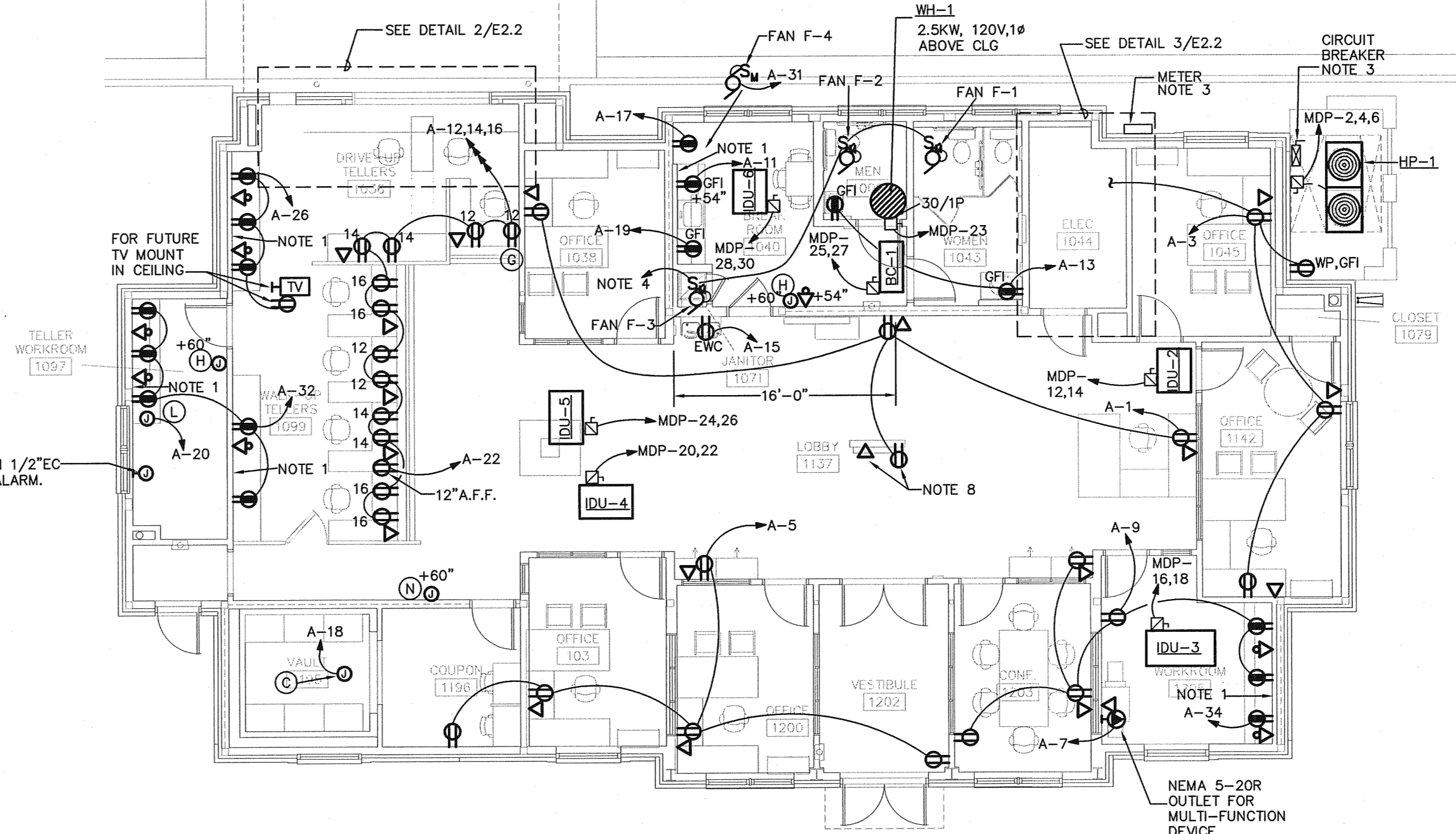


4 MOUNTING HEIGHT - BREAK ROOM AREA
NTS



3 ENLARGED ELEC ROOM
1/4" = 1'-0"

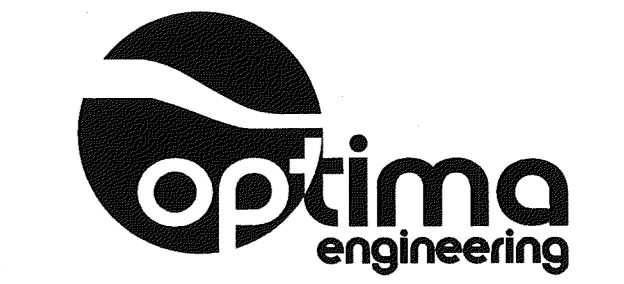
- LEGEND**
- DVR
 - TELEVISION CONTROL CONNECTION
 - ELECTRIC LOCK



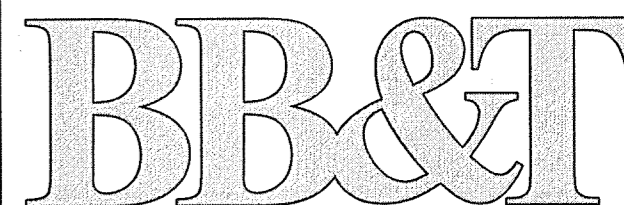
- NOTES:**
1. ALL DEVICES IN THIS ROOM ON THIS WALL SHALL BE MOUNTED AT 48" AFF, UNLESS OTHERWISE NOTED.
 2. PROVIDE FOUR DEDICATED DUPLEX OUTLETS, CIRCUITS A-23,25,27,29 TO BE LOCATED AT THE OWNER'S DISCRETION, FOR DYE PACK & TV MONITOR OPTIONS.
 3. MOUNT AS LOW AS POSSIBLE AND PAINT TO MATCH BUILDING.
 4. CONNECT TO TIMER PROVIDED BY MECHANICAL CONTR. AND WIRED BY ELECTRICAL CONTRACTOR.
 5. CONTRACTOR TO COORDINATE PENETRATIONS THROUGH SHEAR WALLS IN ADDITIONAL BLOCKING REQUIREMENTS NOTED ON STRUCTURAL DRAWINGS.
 6. PROVIDE DATA OUTLET, AND ALARM FOR TCD/TOR. EXACT LOCATION TO BE DETERMINED BY OWNER. TCD/TOR TO BE PROVIDED AND INSTALLED BY OWNER.
 7. ELECTRICAL CONTRACTOR TO PROVIDE AND INSTALL ALL CABLE SUPPORTS FOR LOW VOLTAGE CABLING. CABLE SUPPORTS TO BE NON-UNIFORMLY SPACED FROM 3'-0" ON CENTER MINIMUM TO 6'-0" ON CENTER MAXIMUM. CABLE SUPPORTS TO BE INSTALLED IN A STRAIGHT LINE AS SHOWN ON PLAN. SEE DETAIL 2 ON SHEET E3.3. LOW VOLTAGE CABLING TO BE PROVIDED AND INSTALLED BY OWNER.
 8. RECEPTACLE AND TELE/DATA OUTLET ABOVE CEILING FOR LOBBY WELCOME CENTER. WELCOME CENTER HAS DROPS IN COLUMNS ON EITHER SIDE FOR THESE OUTLETS. COORDINATE EXACT LOCATION OF OUTLETS AND DROPS WITH OWNER'S PROJECT MANAGER.

1 FLOOR PLAN - POWER
1/8" = 1'-0"

2400 Reynolds Road
Suite 202
Winston-Salem, NC 27108
Phone 336 777 3657
Fax 336 777 3658
www.lambert.com

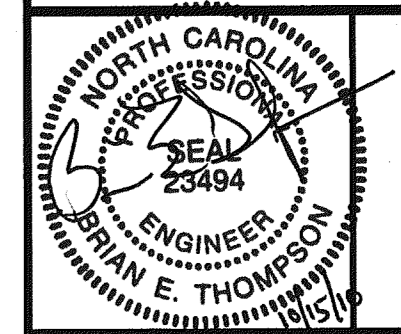


1927 South Tryon St., Suite 300, Charlotte NC 28203
Phone: 704-338-1292 • www.optimaeng.com
North Carolina License Number C-0914



BRANCH BANK
701 VILLAGE WALK DRIVE
HOLLY SPRINGS, NC

BB&T PLANON # DEN-00000126



- OWNER REVIEW
- PRELIMINARY DOCUMENTS
- DESIGN DEVELOPMENT DOCUMENTS
- PERMITTING DOCUMENTS
- BID DOCUMENTS
- CONSTRUCTION DOCUMENTS
- RECORD DOCUMENTS

REVISIONS:

JOB NO: 10036
SHEET

E2.2 3 OF 8

DATE: 10/15/2010
DRAWN: ME/CMP