

VICINITY MAP
NTS

GENERAL NOTES:

- THE INFORMATION SHOWN HEREIN WAS TAKEN FROM A BOUNDARY & TOPOGRAPHIC SURVEY PREPARED BY:
COMMERCIAL SITE DESIGN, PLLC.
8312 CREEDMOOR ROAD
RALEIGH, NC 27613
PHONE: (919) 848-6121
- THE LOCATIONS OF ALL UTILITIES SHOWN ON THESE PLANS ARE BASED ON THE AVAILABLE INFORMATION. THE CONTRACTOR SHALL VERIFY THE EXACT LOCATION OF UTILITIES WITH THE UTILITY OWNERS PRIOR TO COMMENCEMENT OF CONSTRUCTION.

DEMOLITION KEYNOTES

- REMOVE EXISTING ITEM, COORDINATE REMOVAL WITH APPLICABLE FEDERAL, STATE, COUNTY, CITY, LOCAL AGENCIES OR LOCAL UTILITY COMPANY.
- RELOCATE EXISTING ITEM, COORDINATE RELOCATION WITH APPLICABLE FEDERAL, STATE, COUNTY, CITY, LOCAL AGENCIES OR LOCAL UTILITY COMPANY.
- ITEM TO REMAIN.

NO.	DATE	DESCRIPTION
1	07-16-08	REVISE PER NEW LIGHT LOCATIONS
2	06-19-08	REVISE PER TOWN SCOPING MEETING
3	05-19-08	REVISE PER TOWN COMMENTS #1
4	10-08-08	REVISE PER TOWN COMMENTS #2
5	09-13-10	REVISE PER NEW SURVEY
6	11-04-10	REVISE PER TOWN COMMENTS #3

COMMERCIAL SITE DESIGN

(919) 848-6121, FAX: (919) 848-7411
WWW.CSDESIGN.COM

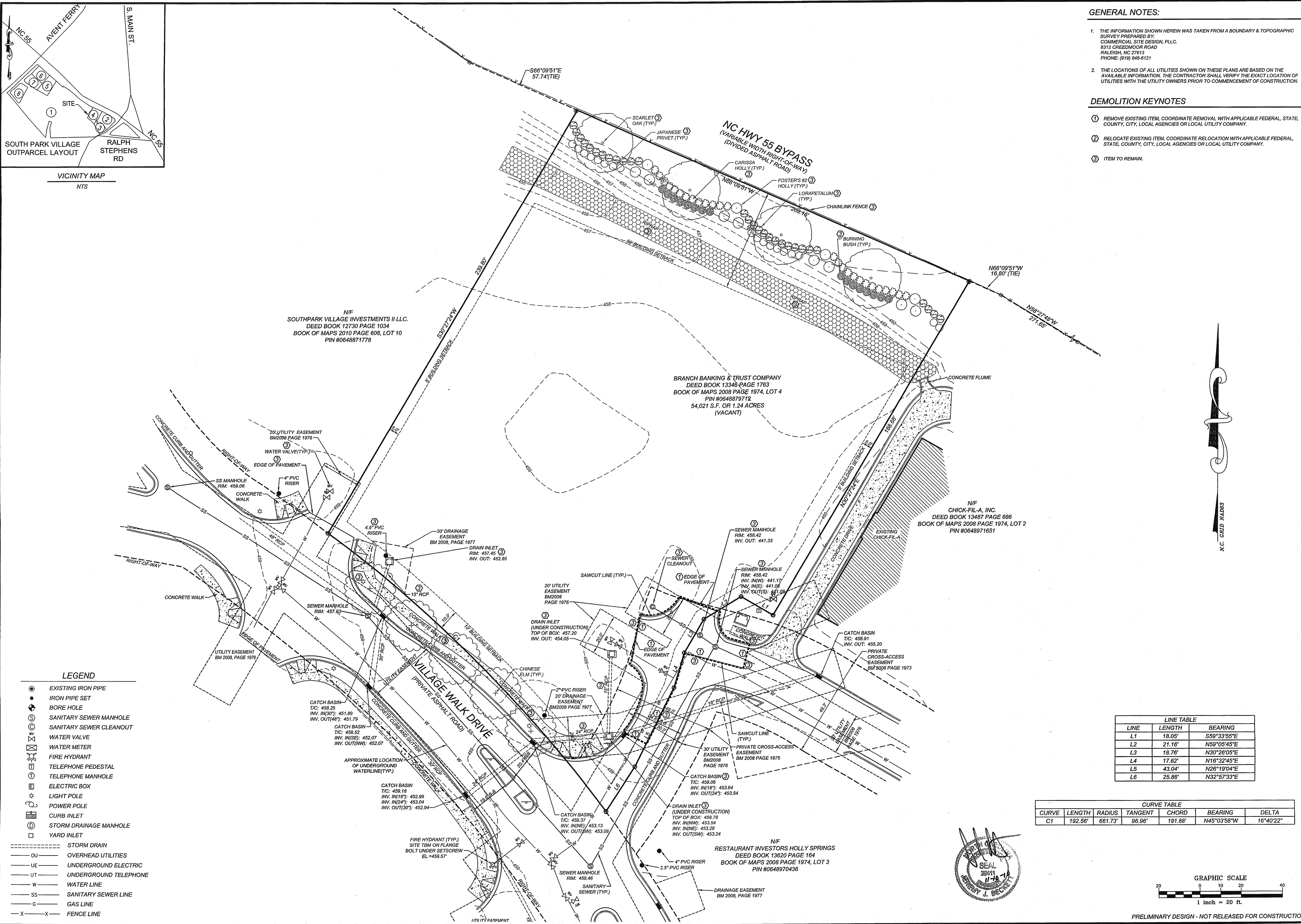
8312 CREEDMOOR ROAD
RALEIGH, NORTH CAROLINA 27613

CLIENT:
BRANCH BANKING & TRUST CO.
P.O. BOX 1290
WINSTON-SALEM, N.C. 27102-1290
PHONE: (336)703-5705
FAX: (336)703-5739

BB&T
SOUTHPARK VILLAGE
707 VILLAGE WALK DRIVE
HOLLY SPRINGS, NORTH CAROLINA

EXISTING CONDITIONS / DEMOLITION PLAN

PROJECT NO. BBT-0714
FILENAME: BBT0714-EC
DRAWN BY: JWR
SCALE: 1" = 20'
DATE: OCTOBER 17, 2007
SHEET NO. C-1



LEGEND

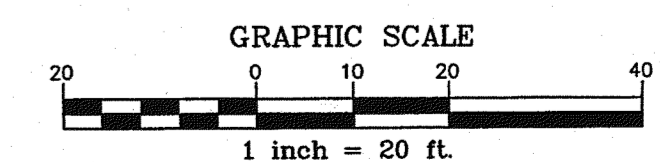
- EXISTING IRON PIPE
- IRON PIPE SET
- BORE HOLE
- SANITARY SEWER MANHOLE
- SANITARY SEWER CLEANOUT
- WATER VALVE
- WATER METER
- FIRE HYDRANT
- TELEPHONE PEDESTAL
- TELEPHONE MANHOLE
- ELECTRIC BOX
- LIGHT POLE
- POWER POLE
- CURB INLET
- STORM DRAINAGE MANHOLE
- YARD INLET
- STORM DRAIN
- OU --- OVERHEAD UTILITIES
- UE --- UNDERGROUND ELECTRIC
- UT --- UNDERGROUND TELEPHONE
- W --- WATER LINE
- SS --- SANITARY SEWER LINE
- G --- GAS LINE
- X --- FENCE LINE

LINE TABLE

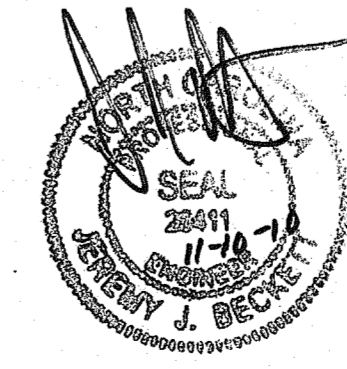
LINE	LENGTH	BEARING
L1	18.05'	S59°33'55"E
L2	21.16'	N59°05'45"E
L3	18.76'	N30°26'05"E
L4	17.62'	N16°32'45"E
L5	43.04'	N26°19'04"E
L6	25.86'	N32°57'33"E

CURVE TABLE

CURVE	LENGTH	RADIUS	TANGENT	CHORD	BEARING	DELTA
C1	192.56'	661.73'	96.96'	191.88'	N45°03'58"W	16°40'22"



PRELIMINARY DESIGN - NOT RELEASED FOR CONSTRUCTION



X:\BBT - BBT\BBT0714 - Holly Springs, NC\CAD\BBT0714-EC.dwg, 11/02/07 8:10:02 AM, chris