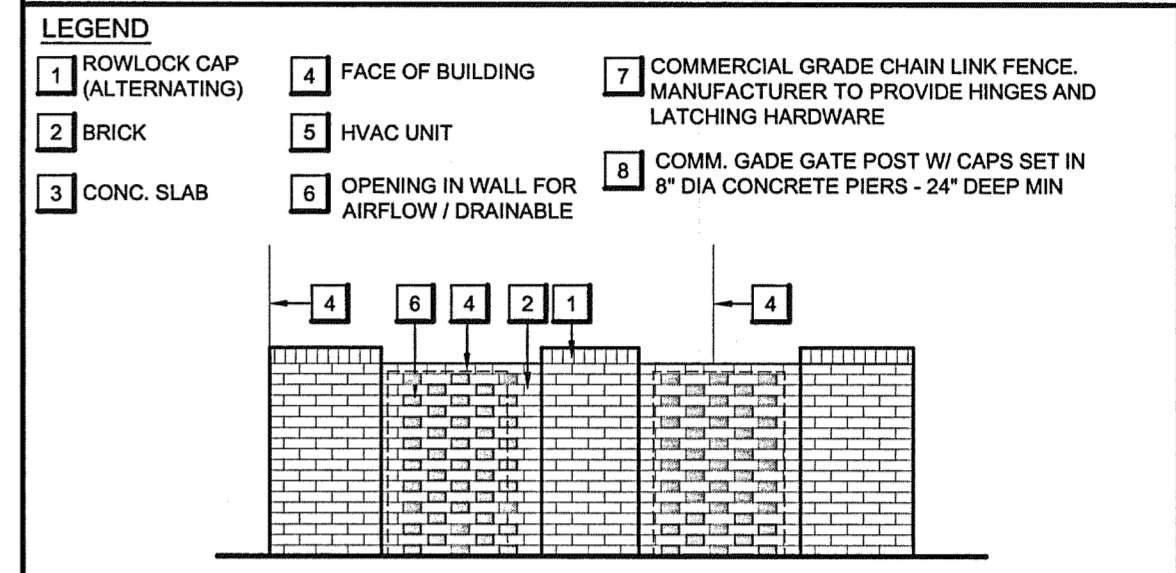
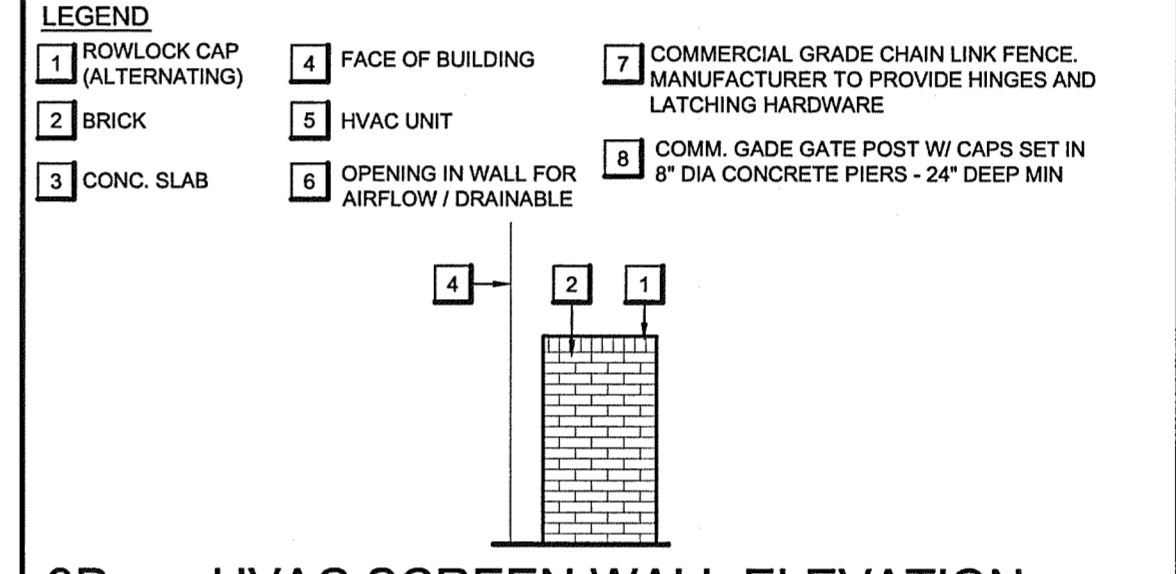


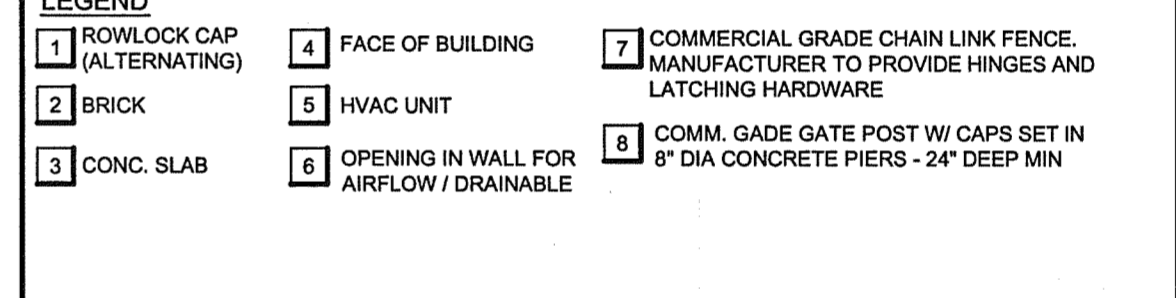
9B HVAC SCREEN WALL ELEVATION
1/4" = 1'-0" 05034E008.DWG



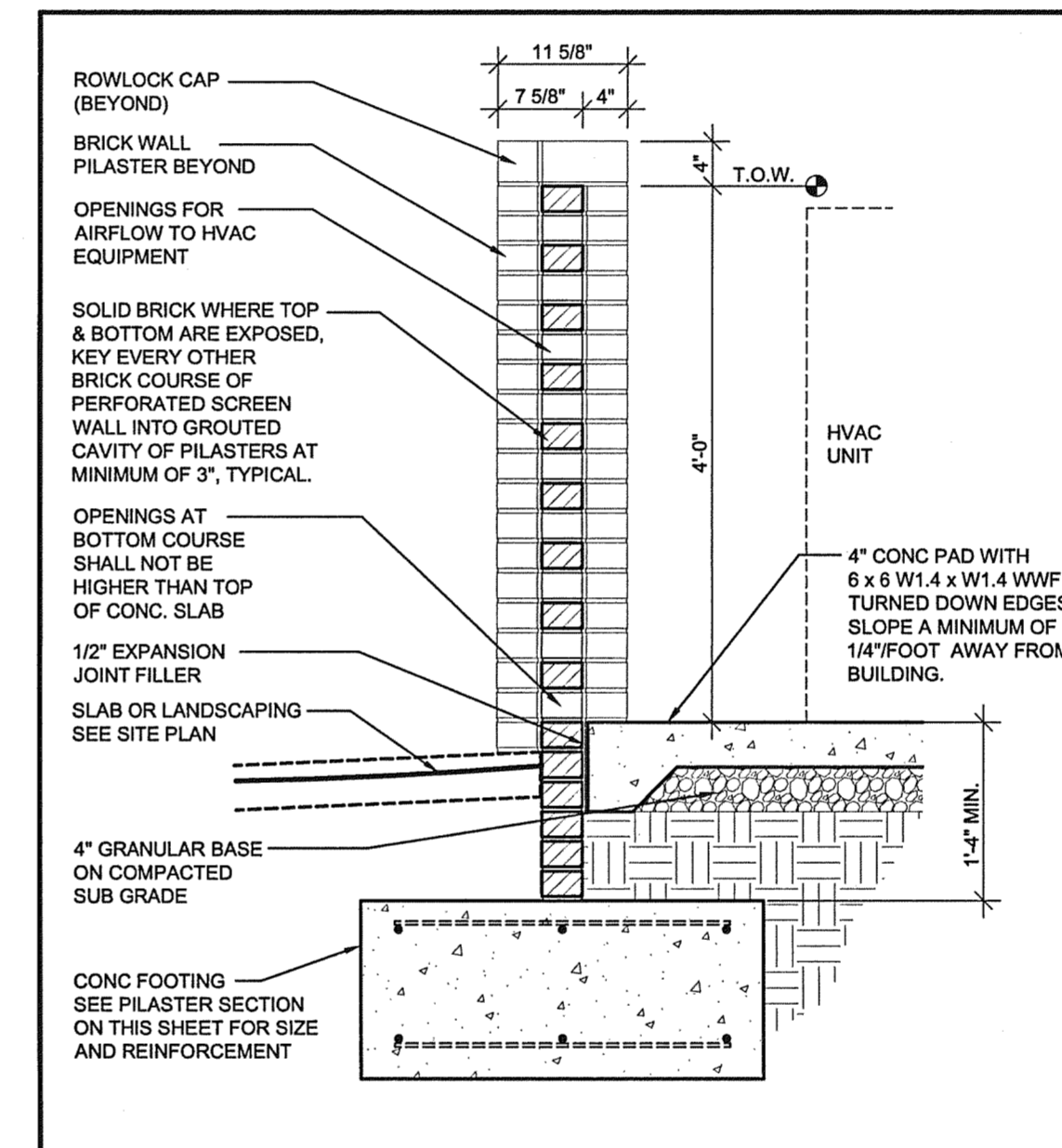
9C HVAC SCREEN WALL ELEVATION
1/4" = 1'-0" 10036E007.DWG



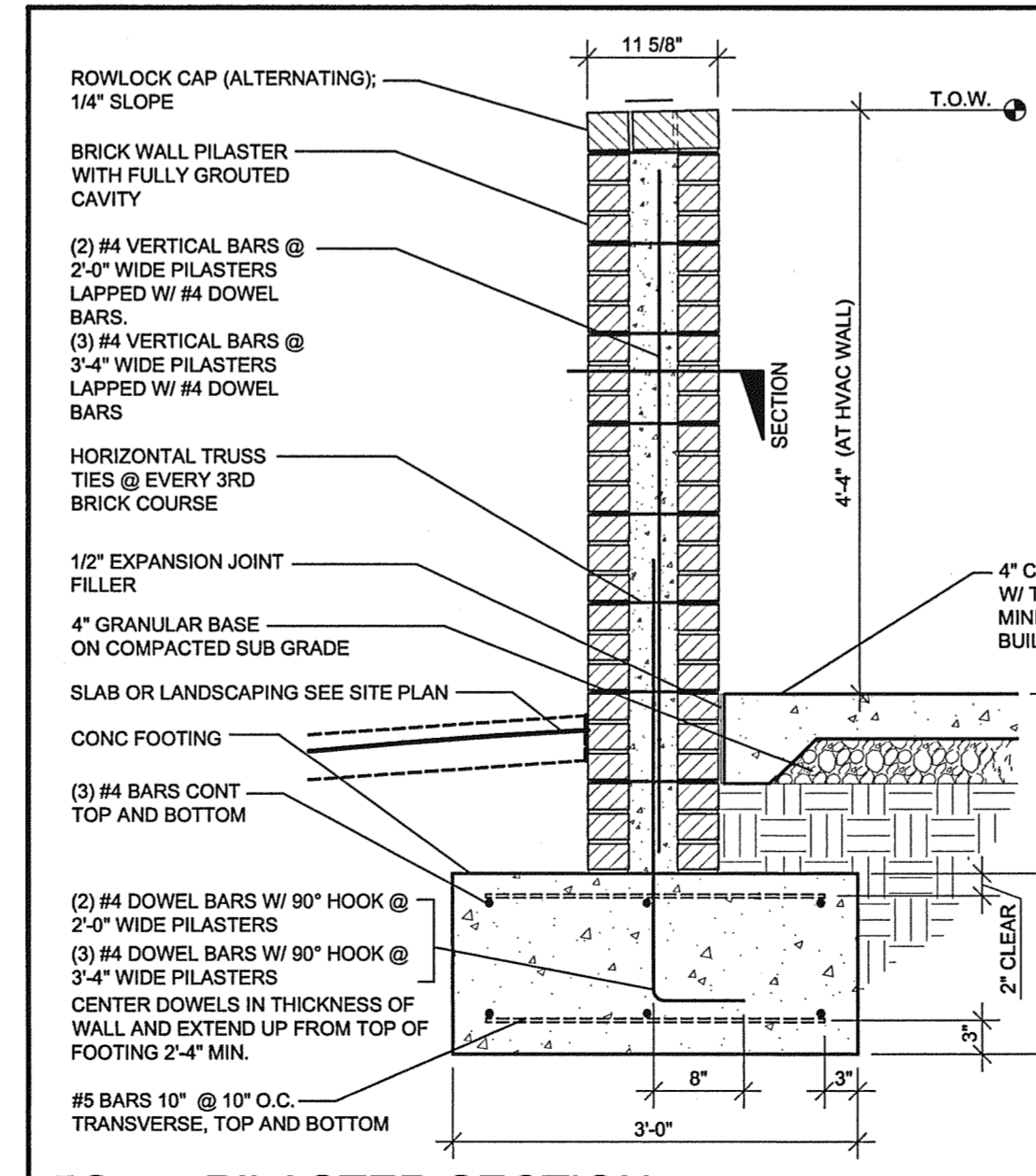
9D HVAC SCREEN WALL ELEVATION
1/4" = 1'-0" 10036E008.DWG



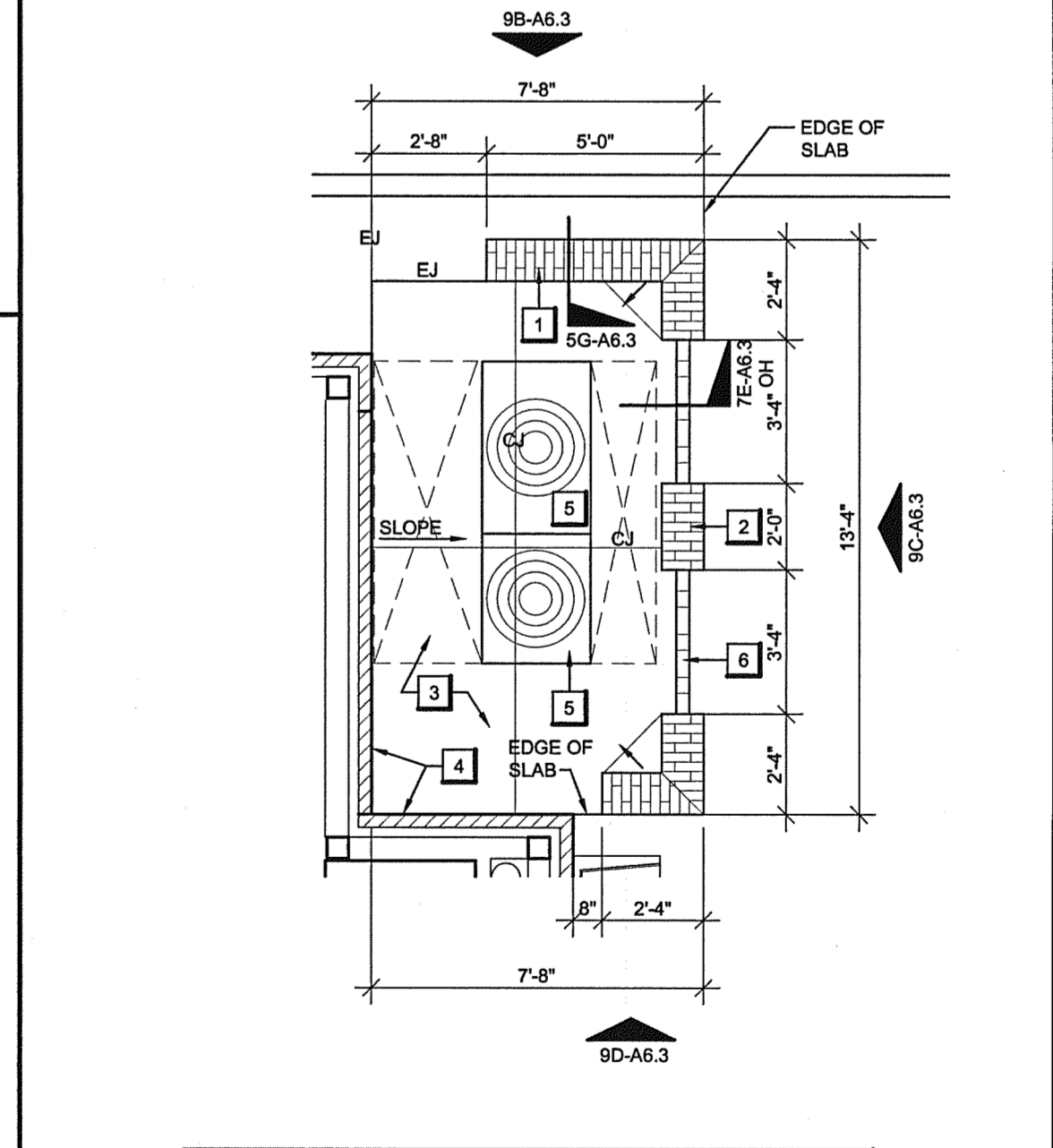
9E HVAC SCREEN WALL ELEVATION
1/4" = 1'-0" 10036E008.DWG



7E HVAC SCREEN WALL SECTION
3/4" = 1'-0" LAIF-GL-0048.DWG



5G PILASTER SECTION
3/4" = 1'-0" 05034-D044.DWG



9G SCREEN WALL PLAN
1/4" = 1'-0" 10036P003.DWG

NOTE:
1. PROVIDE EXPANSION JOINT W/ 1/2" COMPRESSIBLE FILLER AT ALL LOCATIONS BETWEEN CONCRETE PAD AND FACE OF BRICK.
2. WHERE CONCRETE PAD MEETS THE BUILDING, PROVIDE FULL OPEN JOINT WEEPS & FLASHING AT THE FIRST BRICK COURSE ABOVE SOLDIER COURSE.

LAMBERT
ARCHITECTURE • INTERIORS

2400 REYNOLDA ROAD
SUITE 202
WINSTON-SALEM, NC 27106
PHONE 336 777 3657
FAX 336 777 3658
WWW.LAMBERTAI.COM

BB&T

BRANCH BANK
701 VILLAGE WALK DRIVE
HOLLY SPRINGS, NC

BB&T PLANON # DEN-00000126

LAMBERT ARCHITECTURE INTERIORS
REGISTERED ARCHITECT
CERT. No. 485
WINSTON-SALEM, N.C.

DAVID M. LAMBERT, JR.
REGISTERED ARCHITECT
CERT. No. 3899
WINSTON-SALEM, N.C.

- OWNER REVIEW
- PRELIMINARY DOCUMENTS
- DESIGN DEVELOPEMNT DOCUMENTS
- PERMITTING DOCUMENTS
- BID DOCUMENTS
- CONSTRUCTION DOCUMENTS
- RECORD DOCUMENTS

REVISIONS:

JOB NO: 10036
SHEET **A6.3**
DATE: 10/15/2010
DRAWN: RCM